



MANTONS

ESTATE AGENTS

3 Bedroom Detached for Sale - £410,000

Fernheath, Luton, Bedfordshire, LU3 4DG



KEY FEATURES:

- WELL APPOINTED DETACHED FAMILY HOME • THREE GENEROUS SIZE BEDROOMS • NO UPPER CHAIN COMPLICATIONS • EN SUITE TO MASTER BEDROOM • PRIVATE EAST FACING REAR GARDEN • REPLACEMENT BOILER • POTENTIAL TO EXTEND (STP) • 26FT LOUNGE/DINER

Description

MANTONS ESTATE AGENTS are pleased to offer for sale this spacious & well appointed three bedroom detached family home located on the popular Barton Hills development with no upper chain complications.

Potential to extend over the garage (stp), en suite shower room to the master bedroom, private rear garden & a 16ft kitchen/breakfast room are just a few of the attributes this property has to offer.

In brief the property comprises; Entrance porch & hall with stairs rising to the first floor, fitted cloakroom, 26ft open-plan living & dining area with sliding patio doors leading to the rear garden, fitted kitchen/breakfast room with ample units & counter space. On the first floor is a family bathroom suite and three well proportioned bedrooms, master bedroom with en suite shower.

Further benefits include; Gas central heating serviced via a replacement boiler (housed in garage), double glazed windows & doors, garage with paved driveway providing ample off road parking & well tended gardens to both front & rear garden with paved patio.

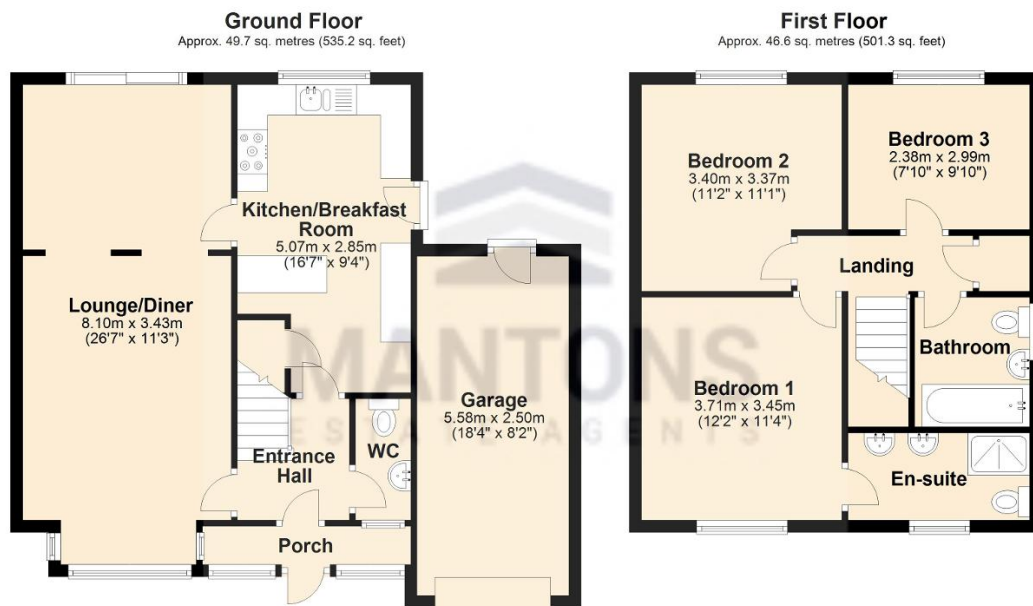
For further information or to arrange a viewing contact Mantons Estate Agents.

Fernheath is a small close of solely detached homes located in Barton Hills, a highly sought after housing development constructed in the early 1990's, proving to be as popular today as when first built. Located within walking distance to all local amenities including; Sainsbury's & Aldi supermarket, doctors, Costa, dentist, public house and local bus routes. Bramingham Primary & Lea Manor High are the school catchments.



Additional Information

EPC Rating C. Council Tax Band E. 1036 sqft (Approx.).



Total area: approx. 96.3 sq. metres (1036.5 sq. feet)