



MANTONS

ESTATE AGENTS

3 Bedroom Bungalow for Sale - £400,000

Norman Road, Barton Le Clay, Bedfordshire, MK45 4PS



KEY FEATURES:

- BEAUTIFULLY PRESENTED BUNGALOW • THREE WELL PROPORTIONED BEDROOMS • DECORATED TO A CONTEMPORARY THEME • GARAGE WITH BLOCK PAVED DRIVEWAY • PRIVATE SOUTH/EAST FACING REAR GARDEN • MODERN SHOWER ROOM & KITCHEN • DOUBLE GLAZED WINDOWS & DOORS • GAS CENTRAL HEATING VIA COMBI BOILER

Description

MANTONS ESTATE AGENTS proudly presents an exceptional opportunity to acquire a stunning three-bedroom semi-detached bungalow nestled in the highly sought-after village of Barton Le Clay. Rarely do properties of such calibre grace the market, especially in a location as desirable as this. Boasting a contemporary aesthetic, this residence has been meticulously maintained & tastefully finished throughout.

Step through the entrance hall, adorned with exquisite Amtico flooring, and discover the expansive 20ft lounge/diner, adorned with the same flooring, a striking feature fireplace, and patio doors that seamlessly transition to the rear garden. The well-appointed kitchen is equipped with integrated appliances including a fridge/freezer, washing machine, and dishwasher, with easy access to the inviting conservatory, perfect for enjoying the serene surroundings. Three generously proportioned bedrooms offer comfortable retreats, while the shower room impresses with its generously sized walk-in shower, ensuring luxurious convenience.

Benefitting from double glazed windows & doors, driveway with both gravel & block paving providing ample off-road parking which leads to a single garage boasting an electric roll-over door for added convenience.

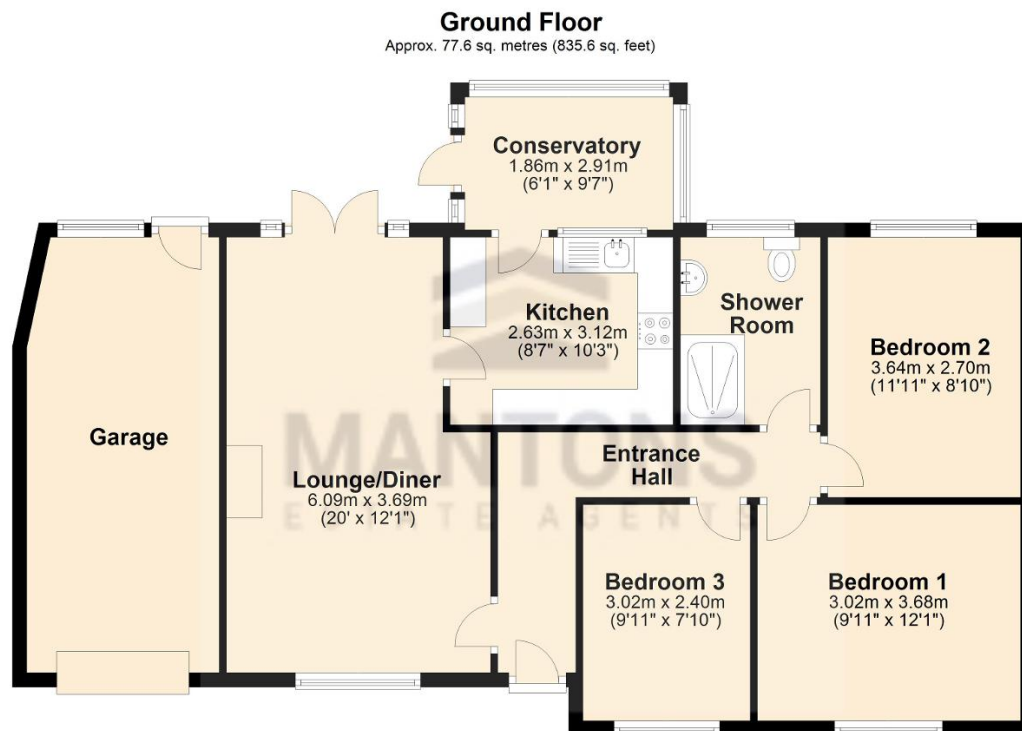
Additional features include loft access via a ladder, gas central heating serviced by a combination boiler discreetly housed in the loft, a low-maintenance, secluded South/East facing rear garden offering tranquility & privacy. For added peace of mind, an intruder alarm system is also installed.

Don't miss out on this rare opportunity to own a piece of paradise in Barton Le Clay. Contact Mantons Estate Agents today for further information or to arrange a private viewing. Act swiftly to secure your slice of serenity before it's too late.

Welcome to Norman Road, nestled in the heart of the sought-after village of Barton-Le-Clay. Immerse yourself in the charm of this locale, where convenience meets comfort.

Discover the ease of daily living with a plethora of amenities within walking distance. From the essentials like the Coop & doctors to the local post office, restaurants, public houses, chemist, butchers & schools, everything you need is at your fingertips. For those who appreciate the outdoors, scenic walks over Barton springs await, providing a tranquil escape right at your doorstep. The availability of a local bus service adds to the accessibility of this picturesque village.

Commute effortlessly with easy access to the Harlington ThamesLink train station, A6 and the M1 motorway, junction 12. In Norman Road, you'll find not just a property, but a lifestyle that



Total area: approx. 77.6 sq. metres (835.6 sq. feet)