



MANTONS

ESTATE AGENTS

3 Bedroom Flat for Rent - £1,100 per month

Elm Avenue, Caddington, Bedfordshire, LU1 4HS



KEY FEATURES:

- SPACIOUS THREE BEDROOM APARTMENT • AVAILABLE TO RENT IMMEDIATELY - £1100 • REFITTED BATHROOM • EASY ACCESS TO M1 JUNCTION 10 • EN SUITE TO MASTER & SECOND BEDROOM • DESIRABLE VILLAGE OF CADDINGTON • DOUBLE GLAZED WINDOWS • GAS CENTRAL HEATING VIA COMBI BOILER

Description

MANTONS LETTINGS are pleased to offer for rent this three bedroom split level apartment located in the heart of the popular village of Caddington.

Recently decorated to a contemporary theme throughout with neutral floor coverings, configured over two floors. Available to rent immediately for £1100 per month.

In brief the property comprises; Entrance located on the ground floor with stairs rising to first floor landing, living room, fitted kitchen & a refitted bathroom. On the top floor are three bedrooms, master bedroom with en suite shower room & second bedroom with en suite toilet.

Further benefits include; Double glazed windows, gas central heating serviced via a combination boiler & allocated parking.

Viewings come recommended to fully appreciate the condition, size & feel this property has to offer. Contact Mantons Estate Agents to arrange a viewing or for more information.

ADDITIONAL INFORMATION

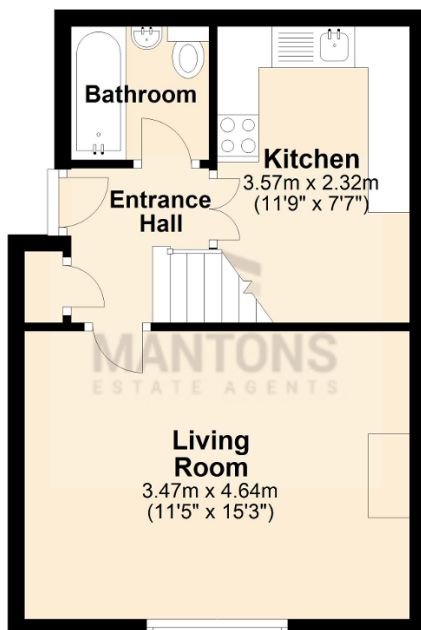
EPC Rating C
Council Tax Band B
Available to rent immediately
Deposit £1269.23 (5 weeks rent)
Holding deposit £253.84 (1 weeks rent)
Unfurnished
Client Money Protect Scheme (CMP) member number CMP005252
The Property Ombudsman (TPO) member number D12281

Elm Avenue is located in the popular quaint village of Caddington, this particular property is positioned above a parade of shops. Caddington is located within close proximity to M1 junction 10, London Luton airport & Luton Thames Link train station.



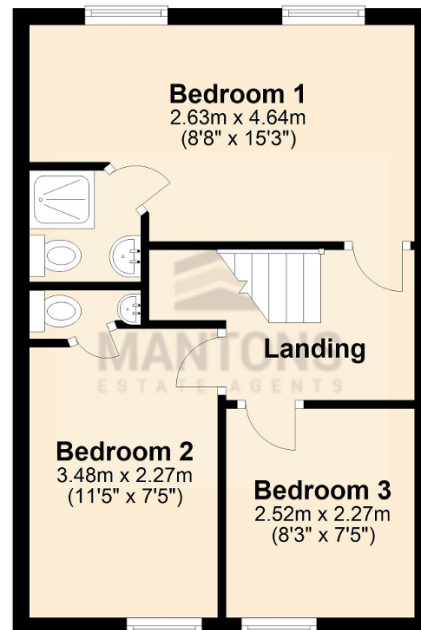
Ground Floor

Approx. 31.6 sq. metres (340.1 sq. feet)



First Floor

Approx. 34.7 sq. metres (373.6 sq. feet)



Total area: approx. 66.3 sq. metres (713.7 sq. feet)