



MANTONS

ESTATE AGENTS

2 Bedroom Chalet for Sale - £280,000

Poplar Avenue, Luton, Bedfordshire, LU3 2BP



KEY FEATURES:

- STUNNING CHALET BUNGALOW IN WARDEN HILLS • REFURBISHED THROUGHOUT IN 2019 • DECORATED TO A CONTEMPORARY THEME • REFITTED KITCHEN & BATHROOM • GAS CENTRAL HEATING VIA COMBI BOILER • BLOCK PAVED DRIVEWAY & GARAGE • TWO BEDROOMS, ONE ON THE GROUND FLOOR • DOUBLE GLAZED WINDOWS & DOORS

Description

MANTONS ESTATE AGENTS are pleased to offer for sale this exceptional two bedroom semi detached chalet bungalow located in the popular 'Warden Hills' area of North Luton.

The property has been completely refurbished in recent years to a very high standard; Rewired, new central heating system, re-plastered & decorated to a modern & contemporary theme throughout, an internal viewing is recommended to fully appreciate.

In brief the property comprises; Entrance porch & hall, refitted kitchen & bathroom, lounge area with feature fire place, dining area with stairs rising to the first floor bedroom, two bedrooms & utility room.

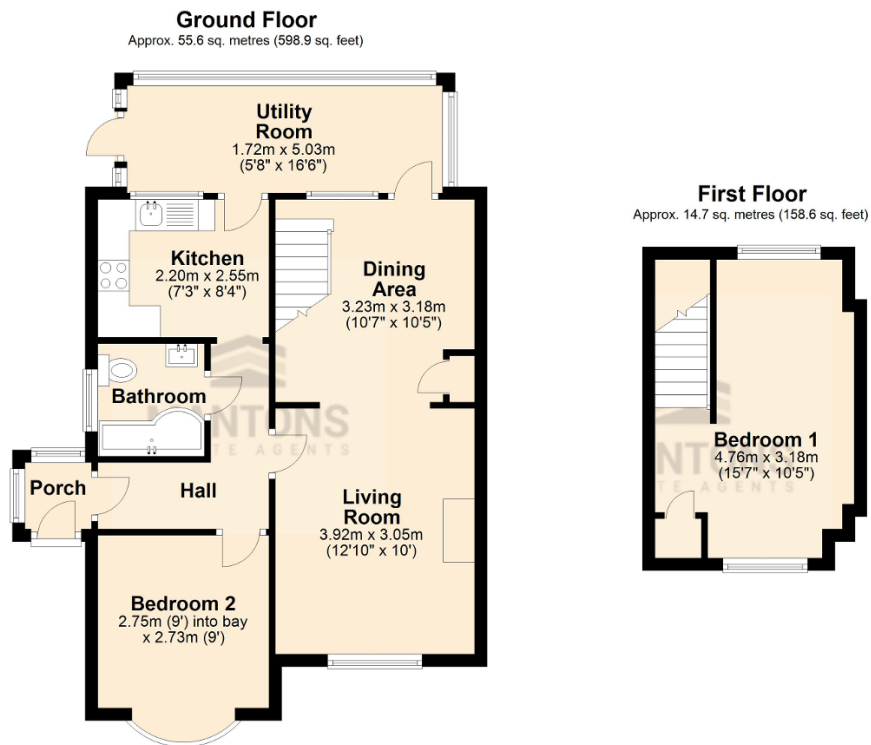
Further benefits include; Double glazed windows & doors, block paved driveway providing ample off road parking, single garage to rear, private West facing rear garden with garden shed.

Contact Mantons Estate Agents for more information or to arrange a viewing.

Poplar Avenue is located in 'Warden Hills', a highly sought-after area in North Luton. Ideally located within walking distance to a small parade of shops, South Beds golf course, local bus stops, Sainsbury's supermarket and doctors surgery. Warden Hill Primary & Icknield High are the school catchments.

Additional Information

EPC Rating D. Council Tax Band C. 757 sqft (Approx).



Total area: approx. 70.4 sq. metres (757.6 sq. feet)