



MANTONS

ESTATE AGENTS

2 Bedroom Bungalow for Sale - £298,000

Calverton Road, Luton, Bedfordshire, LU3 2SX



KEY FEATURES:

- EASY ACCESS TO LEAGRAVE TRAIN STATION
- WELL APPOINTED TWO BEDROOM CHALET
- POPULAR 'LIMBURY MEAD' LOCATION
- DETACHED SINGLE GARAGE WITH DRIVEWAY
- MASTER BEDROOM WITH EN-SUITE
- GROUND FLOOR BATHROOM SUITE
- CONSERVATORY
- DECORATED TO A NEUTRAL THEME THROUGHOUT

Description

MANTONS ESTATE AGENTS are pleased to offer for sale this well appointed two bedroom semi detached chalet style bungalow located in the popular 'Limbury Mead' area of Luton.

The property has a loft conversion providing an additional bedroom with en suite bathroom with the added benefit of a porch extension and conservatory. Decorated to a neutral theme throughout.

In brief the property comprises; Entrance hall, lounge with feature fireplace, ground floor shower room, fitted kitchen, separate dining room opening to the conservatory with stairs leading to first floor and a double bedroom. On the first floor is another generous size bedroom with en-suite bathroom.

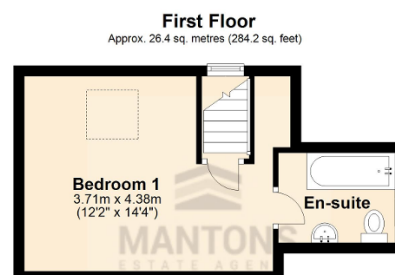
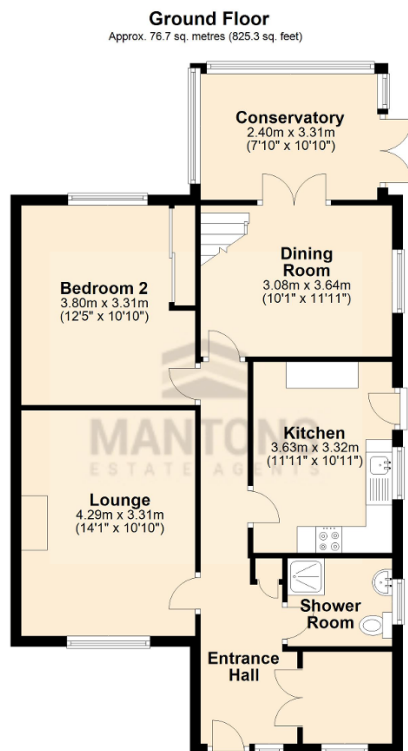
Further benefits include; Double glazed windows & doors, front garden with artificial lawn, block paved driveway for providing ample off road parking leading to a detached garage with power and light, gas central heating via a 'Worcester' boiler, generous size and secluded rear garden with garden shed and power point.

For further information or to arrange a viewing contact Mantons Estate Agents.

Calverton Road is located in the popular Limbury Mead area of Luton, positioned on a generous size plot with ample potential to extend (stp). Within close proximity of all local amenities including a local parade of shops - Tesco's express, hardware store & post office. Leagrave Thames Link train station is within 2 miles, Junction 11 & 11a of the M1 motorway are both close by.

Additional Information

EPC Rating TBC. Council Tax Band C. 1109 sqft (Approx.)



Total area: approx. 103.1 sq. metres (1109.5 sq. feet)