



MANTONS

ESTATE AGENTS

3 Bedroom Semi-Detached for Sale - £290,000

Leagrave High Street, Luton, Bedfordshire, LU4 0NF



KEY FEATURES:

- WELL PRESENTED THREE BEDROOM HOME
- EASY ACCESS TO M1 & TRAIN STATION
- 24FT LOUNGE/DINER
- FITTED KITCHEN/BREAKFAST ROOM
- THREE GOOD SIZE BEDROOMS
- BATHROOM WITH SEPARATE WC
- WELL MAINTAINED REAR GARDEN
- GENEROUS SIZE GARAGE TO THE REAR

Description

MANTONS ESTATE AGENTS are pleased to offer for sale this very well presented three bedroom semi detached family home located in the L&D borders allowing for easy access to M1 junction 11, L&D hospital & Leagrave train station.

The property has been well maintained by the current owners & would make the ideal first time or investment purchase (£1100.00 rental income per month).

In brief the property comprises; Newly constructed entrance porch, Entrance hall with stairs rising to the first floor, 24ft lounge/diner with 'French' doors opening to the rear garden, fitted kitchen/breakfast room. On the first floor there is a fitted bathroom suite with separate wc and three generous size bedrooms, access to loft with loft ladder and light.

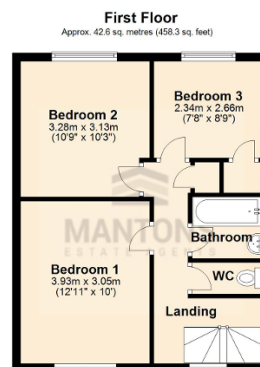
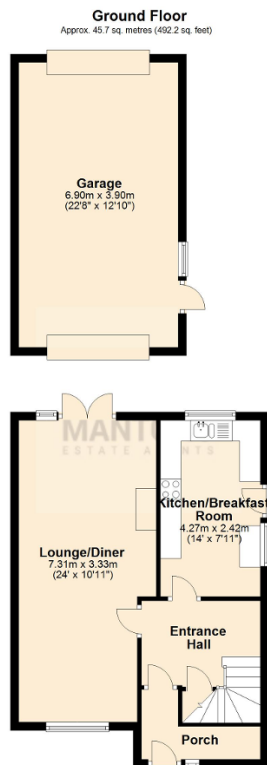
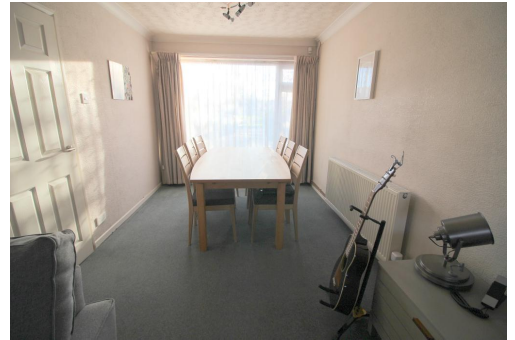
Further benefits include; Well maintained secluded rear garden with paved patio, laid to lawn & two brick built outbuildings. To the front is a block paved driveway providing off road parking for 2 vehicles, generous size garage (3.9m x 6.9m) with power and light at the rear of the property, gas central heating & double glazed windows & doors.

Viewings come highly recommended contact Mantons Estate Agents for more information.

Located on the Luton/Dunstable borders within easy reach of all local amenities including Tesco's supermarket, bus stops & schools. Junction 11 of the M1 motorway is a short drive as is Leagrave Thames Link Train Station and Luton & Dunstable hospital. Ferrars Primary & Chalk Hills Academy are the school catchments.

Additional Information

EPC Rating TBC. Council Tax Band B. 950 sqft (Approx).



Total area: approx. 88.3 sq. metres (950.5 sq. feet)