



MANTONS

ESTATE AGENTS

4 Bedroom Semi-Detached for Sale - £500,000

Osborn Road, Barton Le Clay, Bedfordshire, MK45 4NZ



KEY FEATURES:

- STUNNING SEMI DETACHED FAMILY HOME
- COMPLETELY REFURBISHED THROUGHOUT
- NO UPPER CHAIN COMPLICATIONS
- FOUR GENEROUS SIZE BEDROOMS
- 'WOW FACTOR' KITCHEN/DINING/FAMILY ROOM
- PRIVATE WEST FACING REAR GARDEN
- EN SUITE TO MASTER BEDROOM
- STYLISH BATHROOM & CLOAKROOM

Description

MANTONS ESTATE AGENTS are pleased to offer for sale this exceptional four bedroom extended semi detached family home located on a generous size plot in the popular village of Barton Le Clay. The property has been tastefully refurbished & extended to the rear and side providing over 1500 sqft of modern living accommodation.

An internal is an absolute must to fully appreciate the size, condition and layout this property boasts. 'Hub of the home' kitchen/diner/family room with twin 'French' doors leading to the rear garden, stylish en suite shower room and a private West facing rear garden are just a few of the superlatives this stunning home has to offer.

Decorated to a contemporary theme throughout with a smooth ceilings, modern fixtures, stylish floor coverings and floods of natural light.

In brief the property comprises; Entrance hall, cloakroom, living room, separate snug/home office, stunning open-plan kitchen/dining/family room fitted with integrated dish washer, breakfast bar, soft closer units and a separate utility room. On the first floor is a generous size landing, four well proportioned bedrooms and a stylish family bathroom suite. Master bedroom with a fitted en suite shower room.

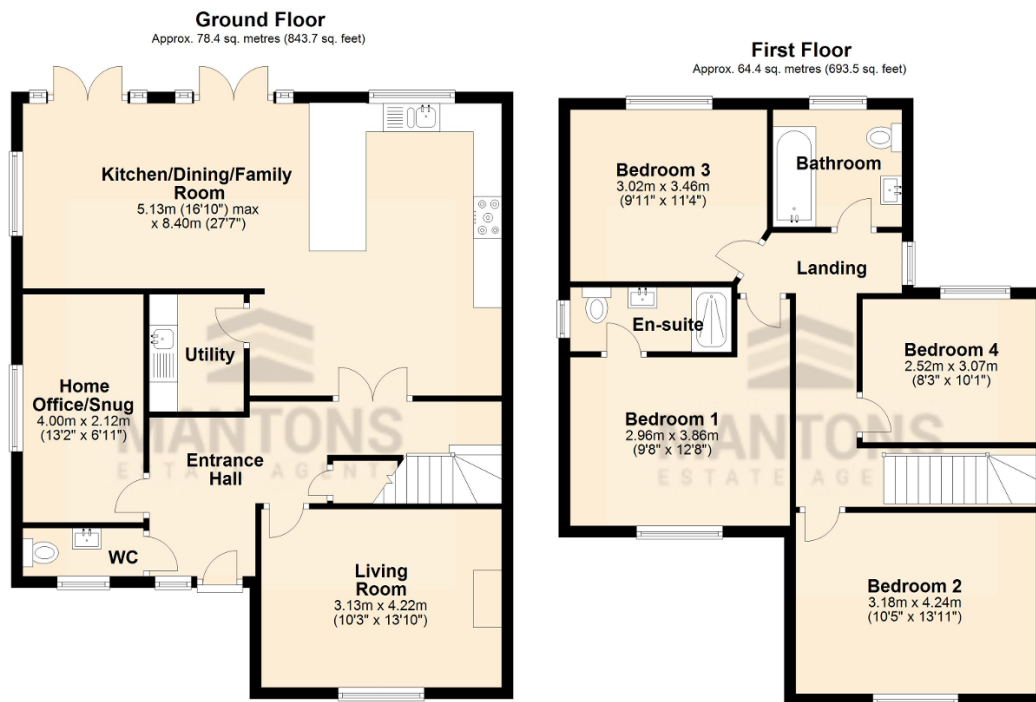
Further benefits include; Gas central heating serviced via a combination boiler, double glazed windows & doors, secluded West facing rear garden with paved patio area and a newly laid lawns, gravelled driveway providing ample off road parking and a hard standing area to the rear, secularly enclosed.

An internal viewing is highly recommended, contact Mantons Estate Agents to arrange or for more information.

Osborn Road is located in the heart of the popular village of Barton-Le-Clay, this particular property occupies a generous size plot. Positioned within walking distance to a vast array of amenities including local shops, doctors, post office & public houses. Scenic walks over Barton springs & local bus service are all on the door step. Easy access to Harlington Thames Link station and M1 motorway. Ramsey Lower, Arnold Middle & Harlington Upper are the school catchments.

Additional Information

EPC Rating TBC. Council Tax Band C. 1537 sqft (Approx).



Total area: approx. 142.8 sq. metres (1537.1 sq. feet)