



MANTONS

ESTATE AGENTS

4 Bedroom Detached for Sale - £450,000

Beckham Close, Luton, Bedfordshire, LU2 7BX



KEY FEATURES:

- IMMACULATE FOUR BEDROOM DETACHED HOME • POPULAR 'WARDEN HILLS' LOCATION •
- POSITIONED ON A GENEROUS SIZE PLOT • EN SUITE TO MASTER BEDROOM • FITTED KITCHEN WITH UTILITY ROOM • FITTED CLOAKROOM & BATHROOM • GARAGE WITH BLOCK PAVED DRIVEWAY •
- DOUBLE GLAZED WINDOWS & DOORS

Description

MANTONS ESTATE AGENTS are pleased to offer for sale this immaculate four bedroom detached family home occupying a generous size plot on the popular 'Warden Hills' development.

Lovingly cared for & maintained by the current owner, an internal viewing is a must to fully appreciate. Private East facing rear garden with a large patio area, two separate reception rooms & garage with block paved driveway.

In brief the property comprises; Entrance hall with stairs rising to the first floor, cloakroom, 17ft living room with feature fire place, separate 16ft dining room with 'French' doors opening to the rear garden, fitted kitchen with integrated fridge & dishwasher leading through to the utility room. To the first floor is a fitted family bathroom suite & four bedrooms, master bedroom with fitted wardrobes & en suite shower room.

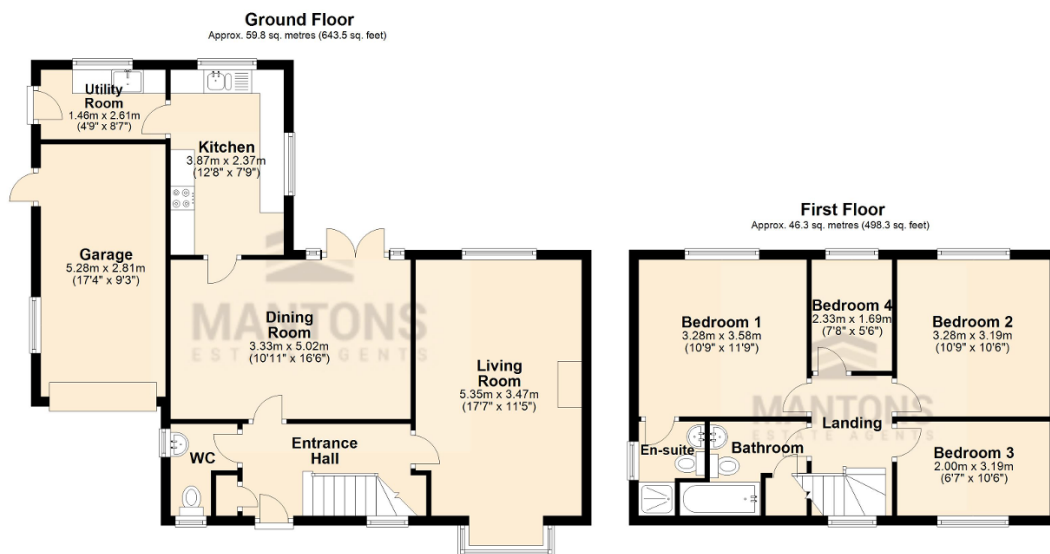
Further benefits include; Double glazed windows & doors, gas central heating, intruder alarm system, part boarded loft with ladder access, well tended gardens to both front & rear, cavity wall insulation, block paved driveway leading to a single garage with electric up & over door.

Contact Mantons Estate Agents to arrange a viewing or for further information.

Beckham Close is located in Warden Hills, a highly sought after area on the northern outskirts of Luton. This particular property is positioned on a generous size plot set amongst similar detached homes. Warden Hills is a short walk away, ideal for enjoying the open fields & hills. Local amenities include Sainsbury's supermarket, South Beds Golf Club, doctors, dentist, public house and local bus routes. Warden Hill Primary & Icknield High are the school catchments.

Additional Information

EPC Rating - TBC. Council Tax Band - E. 1141 sqft (Approx).



Total area: approx. 106.1 sq. metres (1141.8 sq. feet)