

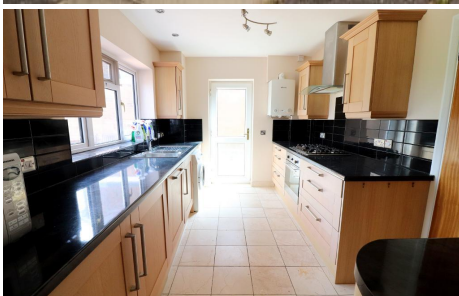


MANTONS

ESTATE AGENTS

4 Bedroom Detached for Sale - £500,000

Turnpike Drive, Luton, Bedfordshire, LU3 3RF



KEY FEATURES:

- WELL APPOINTED DETACHED FAMILY HOME
- NO UPPER CHAIN COMPLICATIONS
- FOUR GENEROUS SIZE BEDROOMS
- EXTENDED TO THE REAR
- GARAGE WITH BLOCK PAVED DRIVEWAY
- FITTED KITCHEN, BATHROOM & CLOAKROOM
- TWO SPACIOUS RECEPTION ROOMS
- ANNEX POTENTIAL TO REAR WITH WET ROOM

Description

MANTONS ESTATE AGENTS are pleased to offer for sale this well appointed four bedroom extended detached family home nestled in a cul de sac on the popular 'Turnpike Drive' development with no upper chain complications.

Extended to the rear providing an additional reception room & wet room, potential for Annex usage. Potential to extend further to the side & convert the garage (stp). Generous size East facing rear garden, garage & block paved driveway and four generous size bedrooms are just a few of the attributes this property has to offer.

In brief the property comprises; Entrance porch & hall with stairs rising to the first floor, cloakroom, 23ft living room opening to a 11ft sitting room & wet room, fitted kitchen with ample units, counter space & integrated appliances. To the first floor is a fitted bathroom suite and four generous size bedrooms, master bedroom with fitted wardrobes.

Further benefits include; Double glazed windows & doors and gas central heating.

Contact Mantons Estate Agents to arrange a viewing or for further information.

Turnpike Drive is a popular location positioned on the north side of Luton within walking distance of beautiful rolling countryside. This particular property is nestled in a cul de sac amongst similar detached homes. Local amenities include; Sainsbury's supermarket, South Beds Golf Club, doctors, dentist, public house and local bus routes. Warden Hill Primary & Icknield High are the school catchments.



Additional Information

EPC Rating TBC. Council Tax Band E. 1339 sqft (Approx.).



Total area: approx. 124.5 sq. metres (1339.6 sq. feet)