

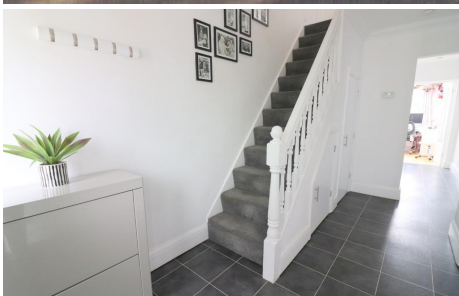


MANTONS

ESTATE AGENTS

4 Bedroom Semi-Detached for Sale - £650,000

Manor Road, Barton Le Clay, Bedfordshire, MK45 4NS



KEY FEATURES:

- VERY IMPRESSIVE EXTENDED FAMILY HOME • FOUR WELL PROPORTIONED BEDROOMS • EN SUITE TO MASTER BEDROOM • PRIVATE EAST FACING REAR GARDEN • 'HUB OF THE HOME' KITCHEN/DINER • DECORATED TO A CONTEMPORARY THEME • LIVING ROOM WITH SEPARATE SITTING ROOM • CLOAKROOM & FAMILY BATHROOM SUITE

Description

MANTONS ESTATE AGENTS are pleased to bring to market this truly stunning four bedroom extended semi detached family home located in the popular village of Barton Le Clay. Extended to the rear & side boasting over 1700 sqft of living space, perfect for a large of growing family.

Exceptional condition throughout with significant upgrades, modifications & a substantial extension to the rear with vaulted ceiling & double story side extension. 33ft refitted kitchen with breakfast bar, ample units & integrated dishwasher, 21ft living room with 'French' doors leading to the rear garden are just a few of the attributes this property has to offer, an internal viewing is a must to fully appreciate.

Decorated to a contemporary theme though-out with smooth ceilings, modern floor coverings & replacement combination boiler.

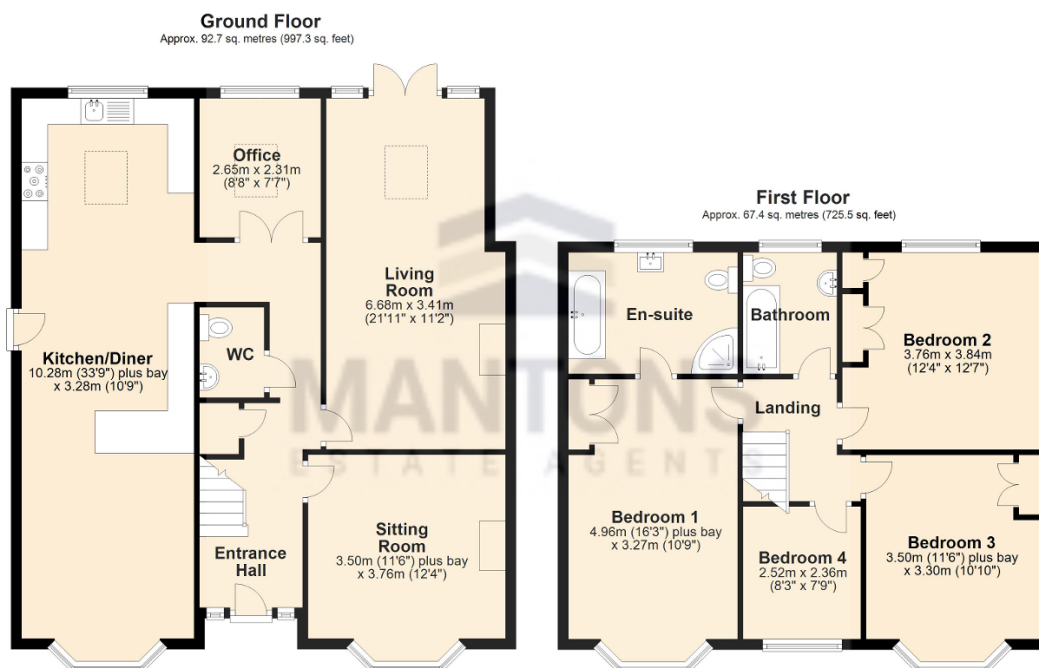
In brief the property comprises; Entrance hall with stairs rising to the first floor, cloakroom, 12ft sitting room with feature fire place, 21ft living room with 'French' doors opening to the rear garden & feature fire place, home office, refitted 33ft kitchen/diner with ample units & breakfast bar. On the first floor is access to a part boarded loft via ladder, four generous size bedrooms & a refitted bathroom suite, master bedroom has a refitted four piece bathroom suite & fitted wardrobes, bedrooms two & three also with fitted wardrobes.

Further benefits include; Private East facing rear garden mainly laid to lawn with two patio areas & storage out-house, block paved driveway, gas central heating serviced via a replacement combination boiler & double glazed windows & doors.

Contact Mantons Estate Agents to arrange a viewing or for further information on this very impressive home.

Manor Road is one of the prime locations in the the popular village of Barton-Le-Clay. Positioned on a generous size plot within walking distance to the vast array of amenities the village as to offer; Coop store, local shops, doctors, chemist, butchers, post office, restaurants & public houses. Scenic walks over the Bedfordshire countryside & Barton springs are both on the door step. Frequent bus links to both Bedford & Luton. Easy access to Harlington Thames Link station, M1 motorway & A6. Ramsey Lower, Arnold Middle & Harlington Upper are the school catchments.

Additional Information



Total area: approx. 160.1 sq. metres (1722.8 sq. feet)