



MANTONS

ESTATE AGENTS

2 Bedroom End Terraced for Sale - £300,000

Temple Close, Luton, Bedfordshire, LU2 7XZ



KEY FEATURES:

- WELL APPOINTED END OF TERRACE HOME
- NO UPPER CHAIN COMPLICATIONS
- TWO BEDROOMS MASTER WITH WARDROBES
- GARAGE & DRIVEWAY
- CUL DE SAC LOCATION IN BUSHMEAD
- DECORATED TO A CONTEMPORARY THEME
- FITTED KITCHEN/DINER & BATHROOM
- WALKING DISTANCE TO SCHOOLS & SHOPS

Description

MANTONS ESTATE AGENTS are pleased to bring to market this impressive two bedroom end of terrace home nestled in a cul de sac on the popular Bushmead development with no upper chain complications.

Decorated to a contemporary theme throughout with a modern kitchen/diner & bathroom suite, garage with driveway & gas central heating serviced via combination boiler are just a few of the attributes this property has to offer.

In brief the property comprises; Entrance hall with stairs rising to the first floor, 13ft living room leading through to a fitted kitchen/diner with double doors opening to the conservatory. On the first is a modern bathroom suite & two bedrooms, master bedroom with storage cupboards.

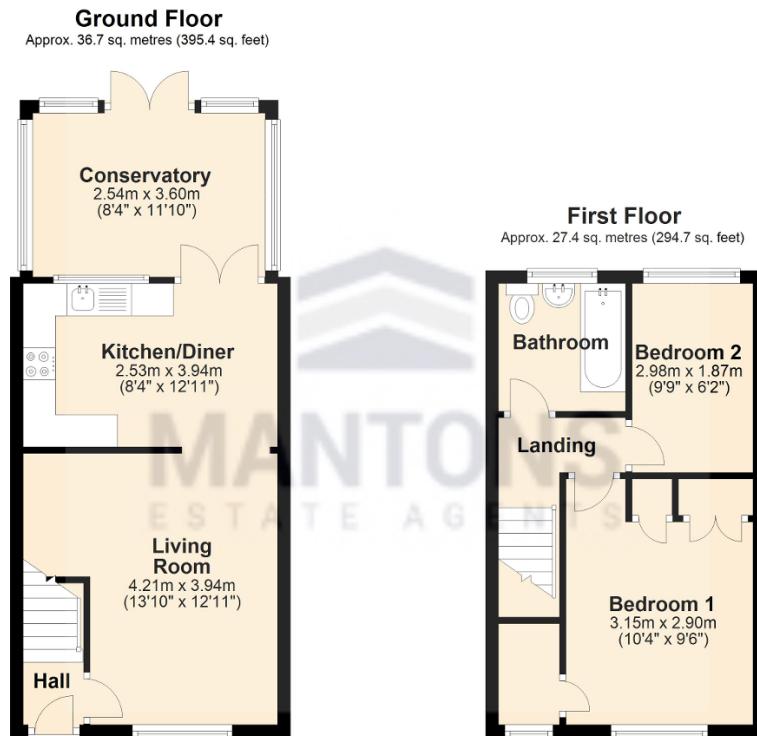
Further benefits include; Double glazed windows & doors, secluded South facing rear garden & a part boarded loft.

To arrange a viewing or for more information contact Mantons Estate Agents.

Temple Close is a small road located in Bushmead, a very popular housing development constructed in the 1990's, this particular property is nestled at the foot of a cul de sac. Within walking distance is beautiful open countryside where you can enjoy scenic walks across Warden Hills. Local amenities including; Coop supermarket, chemist, restaurant, hairdressers & doctors. A frequent bus service operates through the development whilst Luton Thames Link train station is within 2 miles. Luton airport & junction 10 & 11 of the M1 motorway are all within easy reach. Bushmead Primary & Stopsley High are the school catchments.

Additional Information

EPC Rating TBC. Council Tax Band C. 690 sqft (Approx.).



Total area: approx. 64.1 sq. metres (690.1 sq. feet)