

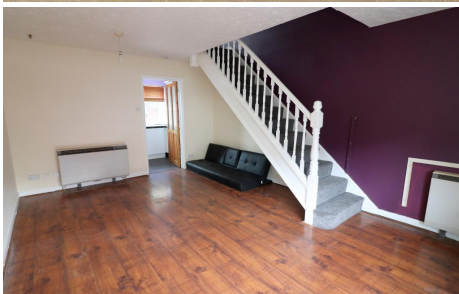


# MANTONS

ESTATE AGENTS

2 Bedroom End Terraced for Rent - £1,050 per month

Pytchley Close, Luton, Bedfordshire, LU2 7YS



## KEY FEATURES:

- WELL APPOINTED END OF TERRACE HOME • AVAILABLE TO RENT IMMEDIATELY - £1000 • TWO BEDROOMS BOTH WITH WARDROBES • CUL DE SAC LOCATION IN BUSHMEAD • GENEROUS SIZE REAR GARDEN • WALKING DISTANCE TO LOCAL SHOPS • EXCELLENT SCHOOL CATCHMENTS • WALKING DISTANCE TO OPEN COUNTRYSIDE

## Description

MANTONS LETTINGS are pleased to offer for rent this two bedroom end of terrace home nestled in a cul de sac on the popular Bushmead development available to rent immediately for £1000.00 per month.

Larger than average rear garden, fitted kitchen & bathroom are just a few of the attributes this property has to offer.

In brief the property comprises; Entrance porch, living room with stairs rising to the first floor, fitted kitchen, fitted bathroom suite & two bedrooms both with fitted wardrobes.

Further benefits include; Double glazed windows & doors, enclosed rear garden and allocated parking bay.

For further information or to arrange a viewing contact Mantons Estate Agents.

## ADDITIONAL INFORMATION

EPC Rating D

Council Tax Band B

Available to rent immediately

Deposit £1150.00 (5 weeks rent)

Holding deposit £230.00 (1 weeks rent)

Unfurnished

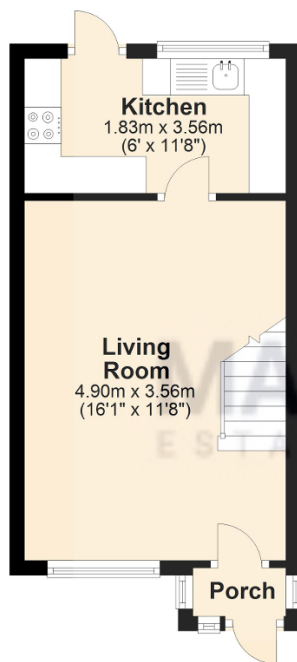
Client Money Protect Scheme (CMP) member number CMP005252

The Property Ombudsman (TPO) member number D12281

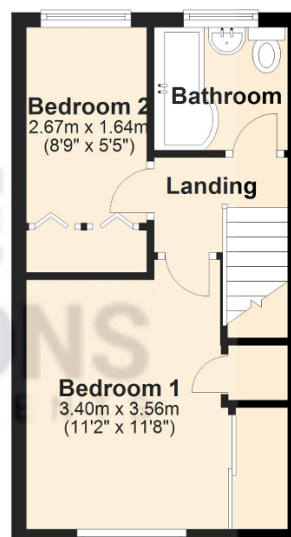
Pytchley Close is located in Bushmead, a very popular housing development constructed in the 1990's. Positioned in the North part of Luton walking distance to open countryside, Warden Hills. This particular property is nestled at the foot of a cul de sac. Local shops, doctors, public house & bus route are all within easy reach. Bushmead Primary & Stopsley High are the school catchments.



**Ground Floor**  
Approx. 25.3 sq. metres (272.2 sq. feet)



**First Floor**  
Approx. 27.2 sq. metres (292.8 sq. feet)



Total area: approx. 52.5 sq. metres (565.0 sq. feet)