



MANTONS

ESTATE AGENTS

2 Bedroom Flat for Rent - £950 per month

Elderberry Close, Luton, Bedfordshire, LU2 8JD



KEY FEATURES:

- IMMACULATE TOP FLOOR APARTMENT • TWO GENEROUS SIZE BEDROOMS • AVAILABLE TO RENT IMMEDIATELY, £950 PCM • NEWLY FITTED STYLISH KITCHEN • NEWLY LAID CARPETS & TILED FLOORING • MODERN BATHROOM SUITE • NEWLY INSTALLED ELECTRIC DIMPLEX HEATERS • WALKING DISTANCE TO STOPSLEY VILLAGE

Description

MANTONS LETTINGS are pleased to offer for sale this very impressive & spacious two bedroom top floor apartment located within a short walk of Stopsley village, available to rent immediately for £950 per month.

The property has recently had some improvements, including; Refitted kitchen, modern 'Dimplex' heaters installed, newly laid carpets & tiled flooring.

In brief the property comprises; Communal entrance hall accessed via a secure intercom system, entrance hall, two double bedrooms, fitted bathroom suite, 16ft lounge/diner & fitted kitchen.

Further benefits include; Double glazed windows & parking bays.

Viewings come highly recommended, contact Mantons to arrange an appointment.

ADDITIONAL INFORMATION

EPC Rating - D

Council Tax Band - A

Available to rent immediately

Deposit £1096.15 (5 weeks rent)

Holding deposit £219.23 (1 weeks rent)

Unfurnished

Client Money Protect Scheme (CMP) member number CMP005252

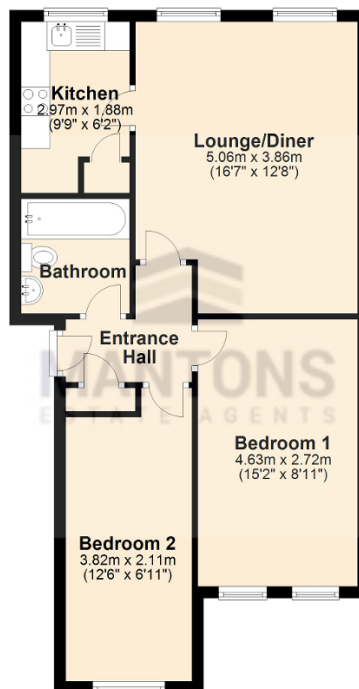
The Property Ombudsman (TPO) member number D12281

Elderberry Close is located within a short walk of Stopsley village where a vast array of amenities can be found including; Tescos, Co Op, doctors, chemist and coffee shops. Junction 10 of the M1 motorway, Parkway Thames Link train station & London Luton airport are all within easy reach. Stopsley Primary & Putteridge High are the school catchments.



Ground Floor

Approx. 55.3 sq. metres (595.6 sq. feet)



Total area: approx. 55.3 sq. metres (595.6 sq. feet)