



MANTONS

ESTATE AGENTS

1 Bedroom Cluster for Rent - £875 per month

Dexter Close, Luton, Bedfordshire, LU3 4DX



KEY FEATURES:

- WELL PRESENTED ONE BEDROOM CLUSTER HOME • DECORATED TO A CONTEMPORARY THEME • AVAILABLE TO RENT IMMEDIATELY - £875 • DRIVEWAY • FITTED KITCHEN WITH APPLIANCES • WALKING DISTANCE TO SAINSBURYS & ALDI • POPULAR BARTON HILLS DEVELOPMENT • NEWLY INSTALLED ELECTRIC HEATERS

Description

MANTONS LETTINGS are pleased to offer for rent this well presented one bedroom cluster home positioned on the popular Barton Hills development available to rent immediately for £875.00 per month.

Decorated to a contemporary theme throughout with laminate flooring, newly installed electric heaters & built-in wardrobe to bedroom.

In brief the property comprises; Entrance porch, kitchen with washing machine, fridge/freezer & built-in oven, hob & extractor fan, lounge with spiral staircase rising to the first floor, double bedroom & modern bathroom suite.

Further benefits include; Double glazed windows, electric heating, driveway & side garden.

For further information or to arrange a viewing contact Mantons Estate Agents.

Under section 21 of the estate agents act 1979 Mantons are disclosing the owners of this property have a connection with a member of staff at Mantons Estate Agents.

ADDITIONAL INFORMATION

EPC Rating D

Council Tax Band B

Available to rent immediately

Deposit £1005.00 (5 weeks rent)

Holding deposit £201.00 (1 weeks rent)

Unfurnished

Client Money Protect Scheme (CMP) member number CMP005252

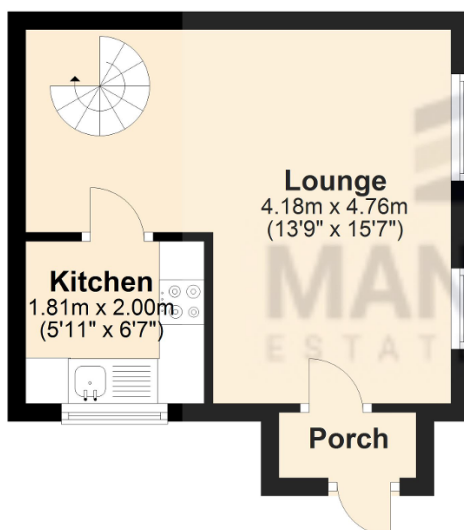
The Property Ombudsman (TPO) member number D12281

Dexter Close is located on the A6 side of Barton Hills, a highly sought after housing development constructed in the early 1990's, proving to be as popular today as when first built. Local amenities include Sainsbury's & Aldi supermarket, doctors, dentist, public house and local bus routes. M1 junction 11 is 5 miles, Leagrave Thames Link train station is 2 miles & London Luton airport is only 7 miles away from the property.



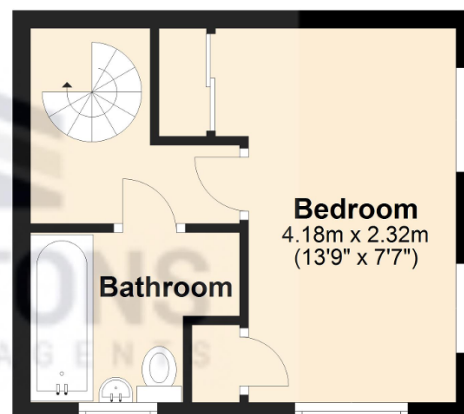
Ground Floor

Approx. 21.2 sq. metres (227.7 sq. feet)



First Floor

Approx. 19.9 sq. metres (214.0 sq. feet)



Total area: approx. 41.0 sq. metres (441.8 sq. feet)