



MANTONS

ESTATE AGENTS

3 Bedroom End Terraced for Sale - £319,950

Long Croft Road, Luton, Bedfordshire, LU1 5RX



KEY FEATURES:

- WELL APPOINTED END OF TERRACE HOME • THREE WELL PROPORTIONED BEDROOMS • NO UPPER CHAIN COMPLICATIONS • AMPLE POTENTIAL TO EXTEND (STP) • FITTED KITCHEN & TWO SHOWER ROOMS • LIVING ROOM & DINING ROOM • EASY ACCESS TO M1 JUN 10 & AIRPORT • PRIVATE REAR GARDEN, 80FT (APPROX.)

Description

MANTONS ESTATE AGENTS are delighted to offer for sale this well appointed three bedroom end of terrace family home located on the popular 'Farley Hill' development with no upper chain complications.

Occupying a generous size plot with ample potential to extend to the front, rear & loft (stp).

In brief the property comprises; Entrance hall with stairs rising to the first floor, living room with bay window, dining room with door leading to the rear garden, fitted kitchen, utility room & shower room. On the first floor is a shower room & three generous size bedrooms.

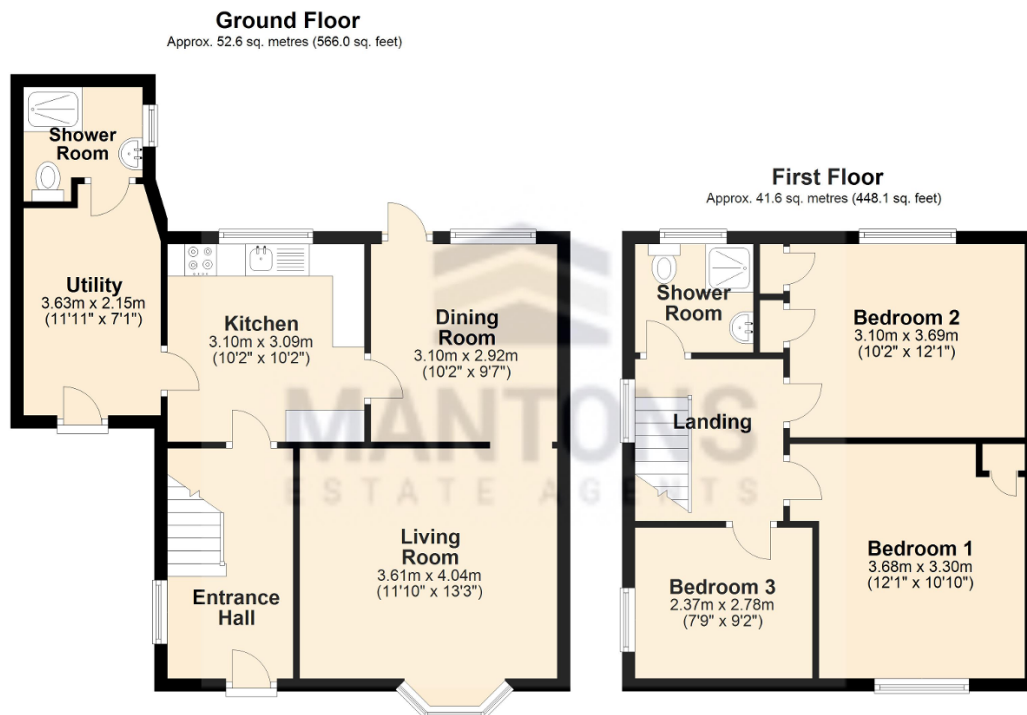
Further benefits include; Double glazed windows & doors, gas central heating, front garden & a generous size (80ft Approx.) secluded rear garden with paved patio area.

Contact Mantons Estate Agents to arrange a viewing or for further information.

Long Croft Road is located in Farley Hill, a very popular estate positioned within walking distance of Luton Thames Link train station and town centre. This particular property occupies a generous size plot with a lovely frontage. London Luton airport, junction 10 of the M1 motorway and local shops are all within easy reach. The Primary schools are Whipperley & Farley Hill, the High school is The Stockwood Park Academy, all within walking distance.

Additional Information

EPC Rating E. Council Tax Band B. 1014 sqft (Approx.)



Total area: approx. 94.2 sq. metres (1014.1 sq. feet)