



MANTONS

ESTATE AGENTS

2 Bedroom End Terraced for Sale - £210,000

Church Street, Lidlington, Bedfordshire, MK43 0RJ



KEY FEATURES:

- CHARMING TWO BEDROOM COTTAGE • NO UPPER CHAIN COMPLICATIONS • IDEAL FIRST TIME OR INVESTMENT PURCHASE • GAS CENTRAL HEATING VIA A COMBI BOILER • SIDE GARDEN • WALKING DISTANCE TO SHOPS • DOUBLE GLAZED WINDOWS & DOORS • DECORATED TO A CONTEMPORARY THEME

Description

MANTONS ESTATE AGENTS are pleased to offer for sale this characterful end of terrace cottage, oozing charm in the popular quaint village of Lidlinton with no upper chain complications.

Ideal first time or investment purchase, decorated to a contemporary theme throughout with gas central heating serviced via a combination boiler.

In brief the property comprises; Lounge with feature brick fireplace, fitted kitchen to the rear, ground floor bathroom suite & two well proportioned bedrooms.

Further benefits include; Double glazed windows & doors, front & side garden laid to lawn with side gated access.

Viewings come highly recommended, contact Mantons Estate Agents to arrange a visit.

Lidlinton is a popular village located along the A421 corridor between Bedford & Milton Keynes. This particular property is within walking distance of open Greenland & the village amenities including; Hairdresser & general store. The village has an unusual Gothic-style church built by the Duke of Bedford in 1845 and a thatched pub on its High Street. On the outskirts of Lidlinton is the village of Marston Moretaine, there sits the Forest Centre & Millennium Country Park in the heart of the Forest of Marston Vale. Church End Lower, Marston Vale Middle & Wootton Upper are the school catchments. Thomas Johnson Lower School is in Lidlinton.

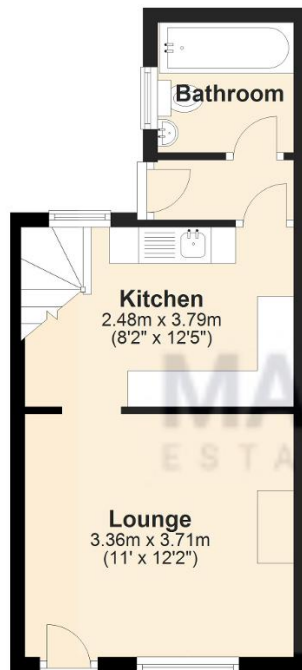
Additional Information

EPC Rating D. Council Tax Band B. 541 sqft (Approx.).



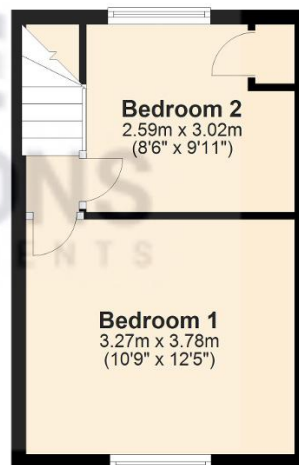
Ground Floor

Approx. 27.6 sq. metres (297.0 sq. feet)



First Floor

Approx. 22.7 sq. metres (244.5 sq. feet)



Total area: approx. 50.3 sq. metres (541.5 sq. feet)