

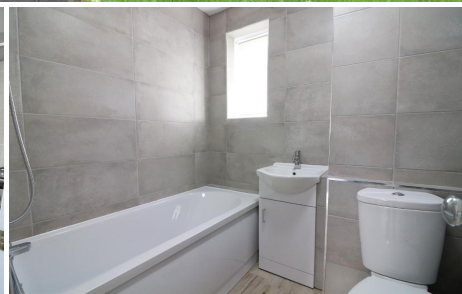


MANTONS

ESTATE AGENTS

2 Bedroom Flat for Rent - £950 per month

Duncombe Close, Luton, Bedfordshire, LU3 2HR



KEY FEATURES:

- WELL PRESENTED FIRST FLOOR APARTMENT • TWO GENEROUS SIZE BEDROOMS • AVAILABLE TO RENT IMMEDIATELY, £950 PCM • DECORATED TO A CONTEMPORARY THEME • STYLISH KITCHEN & BATHROOM • 21FT LOUNGE/DINER • DOUBLE GLAZED WINDOWS • GAS CENTRAL HEATING VIA COMBI BOILER

Description

MANTONS LETTINGS are pleased to offer this very impressive & spacious two bedroom first floor apartment, available to rent immediately for £950 per month.

Decorated to a contemporary theme throughout with a stylish kitchen & bathroom, modern floor coverings, gas central heating serviced via a combination boiler & double glazing.

In brief the property comprises; Communal entrance hall accessed via a secure intercom system, entrance hall, two double bedrooms, fitted bathroom suite, 21ft lounge/diner & fitted kitchen.

Further benefits include; Communal gardens & resident parking.

Viewings come highly recommended, contact Mantons Lettings to arrange an appointment.

ADDITIONAL INFORMATION

EPC Rating - C

Council Tax Band - A

Available to rent immediately

Deposit £1096.15 (5 weeks rent)

Holding deposit £219.23 (1 weeks rent)

Unfurnished

Client Money Protect Scheme (CMP) member number CMP005252

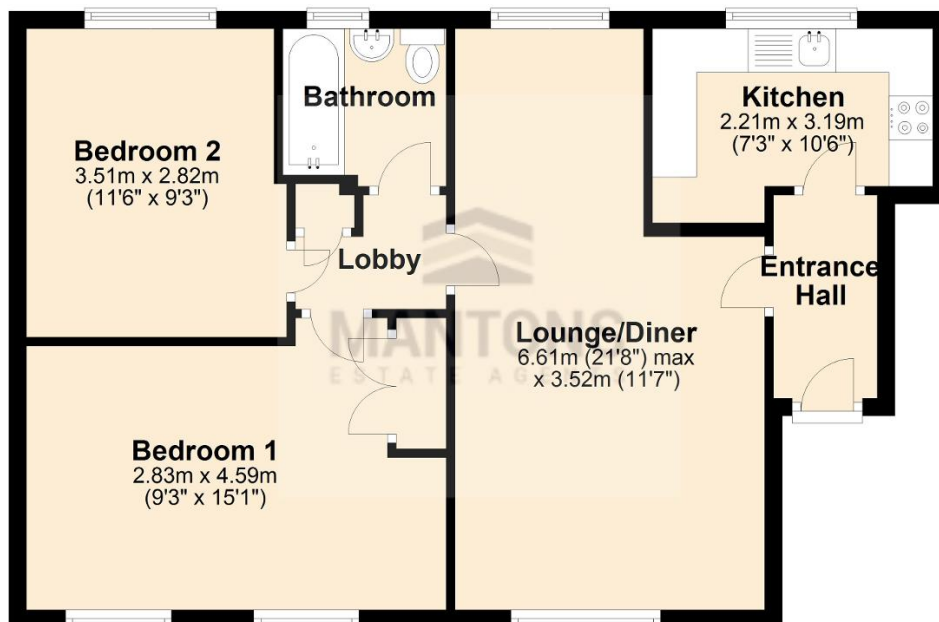
The Property Ombudsman (TPO) member number D12281

Duncombe Close is located in the popular Icknield catchment. Ideally located within walking distance to all local amenities including, shops, doctors, chemist and bakers. Icknield Primary & Icknield High are the school catchments.



Ground Floor

Approx. 62.8 sq. metres (675.9 sq. feet)



Total area: approx. 62.8 sq. metres (675.9 sq. feet)