

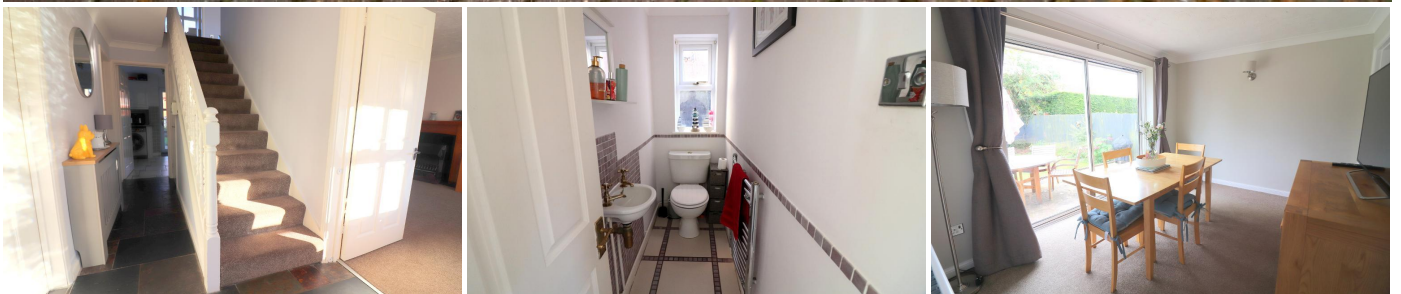


MANTONS

ESTATE AGENTS

4 Bedroom Detached for Sale - £470,000

Sworder Close, Luton, Bedfordshire, LU3 4BJ



KEY FEATURES:

- WELL APPOINTED DETACHED FAMILY HOME • FOUR WELL PROPORTIONED BEDROOMS • CUL DE SAC LOCATION IN BARTON HILLS • REFITTED EN SUITE TO MASTER BEDROOM • BLOCK PAVED DRIVEWAY & GARAGE • LIVING, DINING & SITTING ROOM • FITTED KITCHEN, BATHROOM & CLOAKROOM • WALKING DISTANCE TO SAINSBURYS & ALDI

Description

Welcome to this immaculate four-bedroom detached family home, proudly presented by MANTONS ESTATE AGENTS. Nestled in a quiet cul-de-sac within the sought-after Barton Hills development, this property offers a perfect blend of comfort and style.

Upon entering, you are greeted by an inviting entrance hall leading to a thoughtfully designed ground floor. The original garage has been ingeniously converted into additional living space, adding versatility to the property. A generously sized, larger-than-average garage has been meticulously constructed on the drive.

With a total living space of 1150 sqft, this home ensures ample room for your family's needs. The ground floor comprises a 17ft living room featuring a bay window, a separate dining room with patio doors opening to the rear garden, a 16ft sitting room, & a well-fitted kitchen. The ground floor is completed with a convenient cloakroom. Ascend the stairs to discover a thoughtfully arranged first floor. The master bedroom boasts a refitted en suite shower room, while three additional well-proportioned bedrooms share a stylishly refitted bathroom suite.

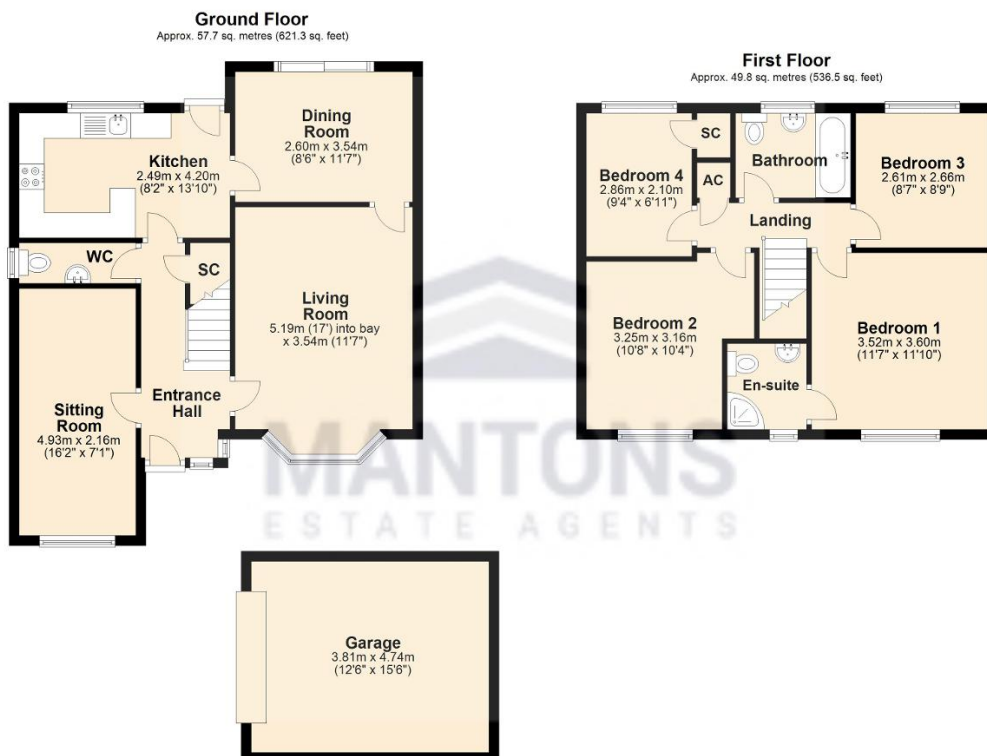
Notable features include double glazed windows & doors, gas central heating, & a block-paved driveway providing ample off-road parking. A larger-than-average single garage is conveniently located on the drive. Access to a boarded loft is made easy with a loft ladder. Step outside into the North/East facing rear garden, featuring a patio area; perfect for outdoor relaxation.

This impressive home is not just a property; it's an opportunity for a lifestyle upgrade. Contact Mantons Estate Agents today to arrange a viewing or to receive further information on this exceptional family residence.

Step into the inviting neighborhood of Sworder Close, a gem within the Barton Hills development. This cherished road, lined with solely detached homes from the early 1990s, still captures hearts today, radiating a timeless appeal.

Our featured property boasts an enviable secluded position, tucked away in a cul de sac that offers ample space for you to create lasting memories. Beyond its doorstep lies a neighborhood brimming with life; take a leisurely stroll to discover open parkland, embrace the serenity of the countryside, or pop over to Sainsbury's & Aldi supermarkets for your daily needs. Imagine the convenience of having doctors, dentists, a friendly local pub, and easily accessible bus routes within a short walk.

For families, the renowned Bramingham Primary & Lea Manor High School are right within reach, ensuring that quality education is part of the package.



Total area: approx. 107.6 sq. metres (1157.8 sq. feet)