



MANTONS

ESTATE AGENTS

2 Bedroom Bungalow for Sale - £260,000

Canberra Gardens, Luton, Bedfordshire, LU3 2EU



KEY FEATURES:

- WELL APPOINTED SEMI DETACHED BUNGALOW • NO UPPER CHAIN COMPLICATIONS • GARAGE & DRIVEWAY • POPULAR 'WARDEN HILLS' LOCATION • AMPLE POTENTIAL TO EXTEND FURTHER (STP) • WALKING DISTANCE TO SAINSBURYS & ALDI • EXTENDED TO THE SIDE • TWO BEDROOMS

Description

MANTONS ESTATE AGENTS are delighted to present this well-appointed two-bedroom extended semi-detached bungalow, boasting the added benefit of no upper chain complications.

The extension to the side has enhanced the property by providing a more spacious entrance hall & kitchen, along with the addition of a shower room featuring a walk-in shower. While the residence is in need of some modernisation, this is thoughtfully reflected in the marketing price, presenting an excellent opportunity to fashion your ideal home.

In summary, the property comprises an entrance hall, a comfortable living room, two bedrooms, kitchen, utility room & shower room.

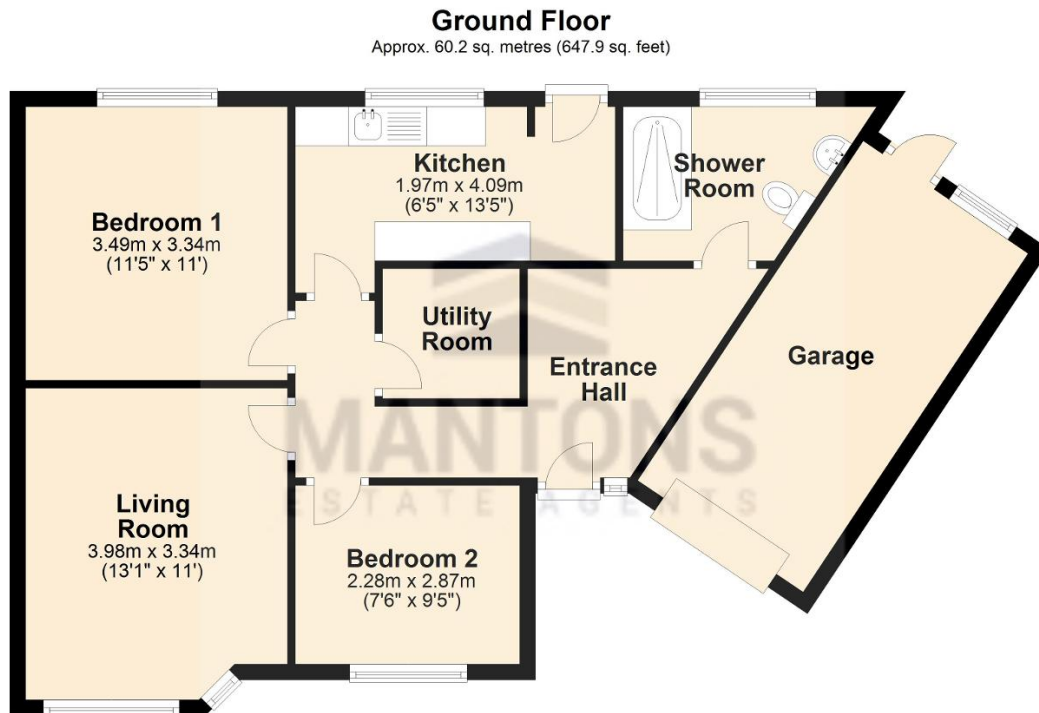
Further advantages encompass a secluded rear garden, front garden, double glazed windows & doors, gas central heating, & garage with driveway.

For more detailed information or to arrange a viewing, please do not hesitate to contact Mantons Estate Agents.

Canberra Gardens resides in the sought-after 'Warden Hill' area of North Luton, with this specific property situated at the end of a cul-de-sac, offering a spacious plot. A short stroll away, residents have access to a small parade of shops featuring a pharmacy, Morrisons, & a launderette. The convenience extends to nearby amenities such as the South Beds golf course, local bus stops, Sainsbury's & Aldi supermarkets, & a doctors' surgery. Icknield Primary & High schools are the designated catchments, further enhancing the appeal of this well-located property.

Additional Information

EPC Rating E. Council Tax Band C. 647 sqft (Approx).



Total area: approx. 60.2 sq. metres (647.9 sq. feet)