

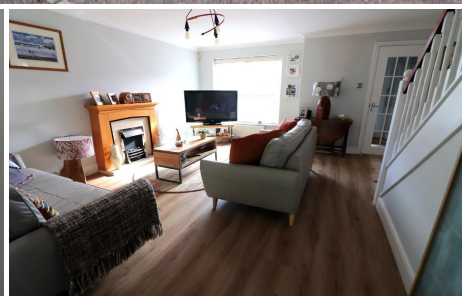
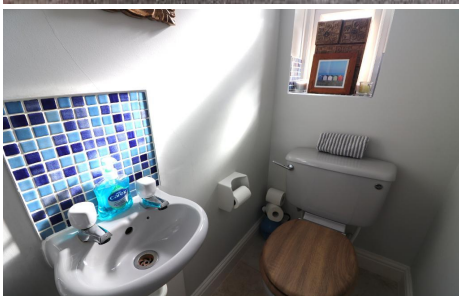


MANTONS

ESTATE AGENTS

3 Bedroom Link Detached for Sale - £440,000

Edkins Close, Luton, Bedfordshire, LU2 7SS



KEY FEATURES:

- EXTENDED LINK DETACHED FAMILY HOME • SPACIOUS MASTER BEDROOM WITH EN-SUITE • OPEN PLAN KITCHEN/FAMILY ROOM • SEPARATE DINING ROOM • CUL DE SAC LOCATION IN BUSHMEAD • WALKING DISTANCE TO SCHOOLS & SHOPS • THREE WELL PROPORTIONED BEDROOMS • CLOAKROOM

Description

MANTONS ESTATE AGENTS proudly presents this exquisite three bedroom extended link detached family residence, nestled within a serene cul-de-sac in the sought-after Bushmead area of Luton. This property has undergone significant upgrades and modifications in recent years, including a double storey rear extension that amplifies the living space to cater for growing family.

The conversion of the garage into an additional dining room with vaulted ceiling & sky lights makes for a lovely bright room adding versatility to the layout. Throughout, a contemporary aesthetic prevails, with smooth ceilings, chic fixtures & fittings enhancing the ambiance. The heart of the home is undoubtedly the striking kitchen/family room, a seamless blend of style & functionality, bathed in natural light courtesy of glazed windows & French double doors leading to rear garden.

Upon entering, you are greeted by an inviting entrance hall leading to a spacious living room flowing seamlessly into the kitchen/family room. The ground floor also features a dining room & a convenient cloakroom.

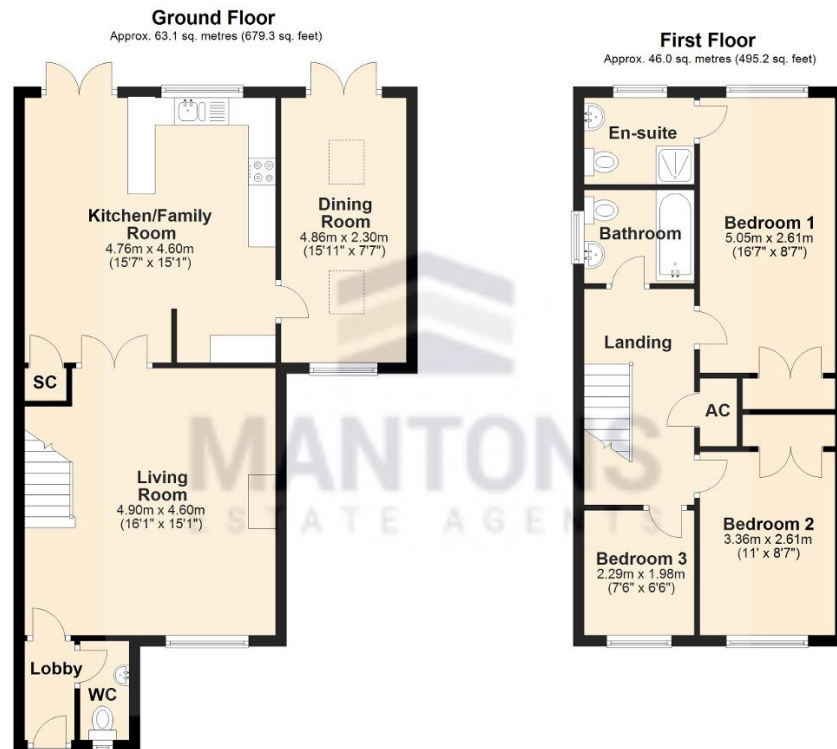
Ascend the stairs to discover three generously proportioned bedrooms & a tastefully refitted bathroom suite. The spacious master bedroom boasts built-in wardrobes & an en suite shower room, while bedroom two also offers built-in wardrobes.

Further enhancing the appeal of this exceptional home are replacement double glazed windows & doors, ladder access to a part boarded loft, block-paved driveway & rear garden featuring a paved patio ideal for alfresco entertaining, summer house, enjoying a desirable South/Westerly aspect with gated side access.

Do not miss the opportunity to experience the allure of this remarkable property first hand. Contact Mantons Estate Agents today to arrange a viewing or to acquire further information.

Edkins Close is nestled within Bushmead, a charming housing development that rose to prominence in the 1990s. Situated in the northern part of Luton, it offers convenient access to the serene expanses of Warden Hills, just a stroll away. Within easy reach are local amenities such as Coop supermarket, pharmacy, doctors, a public house & a bus route, ensuring residents' everyday needs are met with ease. Families will appreciate the proximity to Bushmead Primary & Stopsley High, making it an ideal location for those with school-aged children

Additional Information



Total area: approx. 109.1 sq. metres (1174.5 sq. feet)