



MANTONS

ESTATE AGENTS

2 Bedroom Semi-Detached for Sale - Guide Price £300,000

Wandon End Road, Wandon End, Hertfordshire, LU2 8NX



KEY FEATURES:

- WELL APPOINTED SEMI DETACHED COTTAGE • OCCUPYING A GENEROUS SIZE PLOT • NO UPPER CHAIN COMPLICATIONS • POTENTIAL TO DEVELOP THE LAND (STP) • BEAUTIFUL VIEWS OVER OPEN COUNTRYSIDE • EASY ACCESS TO M1 & LUTON AIRPORT • VARIOUS OUT-BUILDINGS & GARAGE • TWO BEDROOMS

Description

MANTONS ESTATE AGENTS are pleased to offer for sale this charming two bedroom semi detached cottage in the popular hamlet of Wandon End, available with no upper chain complications.

Occupying a generous size plot, offering scope for extension or development (subject to planning permission).

Built in the late 1800s, this property blends historic architecture with modern potential. The rear garden provides complete privacy & boasts beautiful views of the open countryside.

The property features an entrance hall with stairs leading to the first floor, a sitting room, living room, kitchen with a boot room & a ground floor bathroom. On the first floor, there are two generously sized bedrooms.

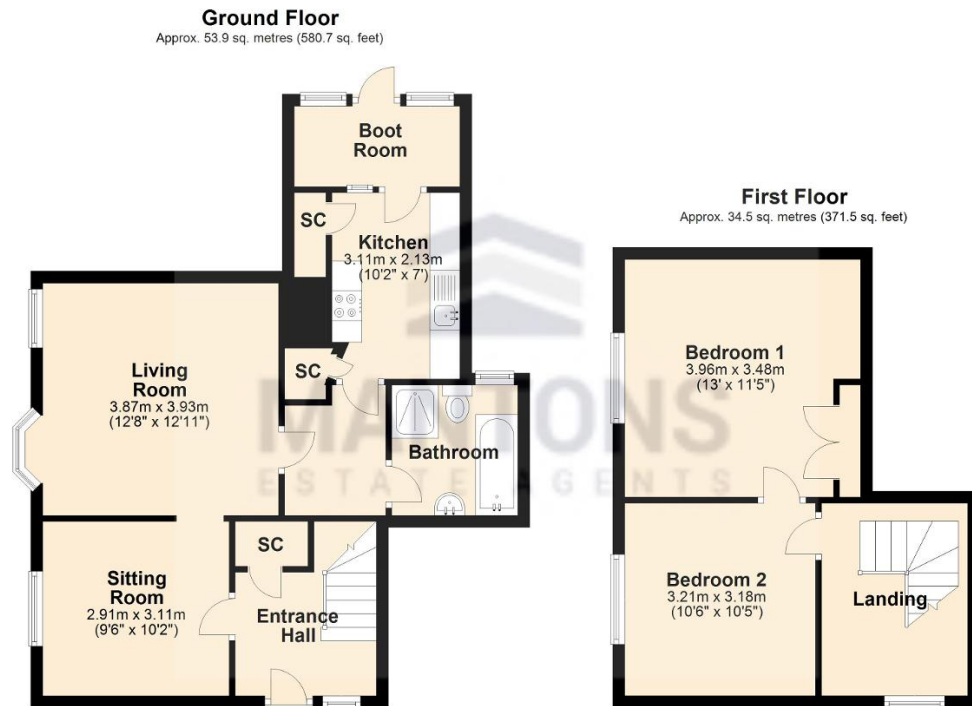
Externally, the property includes ample outbuildings, garage & a spacious driveway.

Viewings are highly recommended. Contact Mantons Estate Agents to arrange a visit.

Wandon End is a small hamlet situated near Tea Green & Breachwood Green. This property offers stunning views of the open countryside whilst occupying a generous size plot. Providing convenient access to Junction 10 of the M1 motorway, Parkway ThamesLink train station & London Luton Airport.

Additional Information

EPC Rating F. Council Tax Band E. 952 sqft (Approx.)



Total area: approx. 88.5 sq. metres (952.2 sq. feet)