



MANTONS

ESTATE AGENTS

3 Bedroom End Terraced for Sale - £340,000

Spurcroft, Luton, Bedfordshire, LU3 4EG



KEY FEATURES:

- WELL APPOINTED END OF TERRACE HOME
- THREE WELL PROPORTIONED BEDROOMS
- NO UPPER CHAIN COMPLICATIONS
- POPULAR 'BARTON HILLS' LOCATION
- GAS CENTRAL HEATING
- GARAGE & DRIVEWAY
- PRIVATE WEST FACING REAR GARDEN
- DOUBLE GLAZED WINDOWS & DOORS

Description

MANTONS ESTATE AGENTS proudly presents this immaculate three bedroom end of terrace home, nestled in the sought-after Barton Hills development with no upper chain complications.

Recently decorated to a contemporary theme throughout with neutral floor coverings. Greeted with an inviting entrance hall with stairs rising to the first floor, spacious 26ft lounge/diner leading through to a modern kitchen, fitted with ample units & counter space.

The first floor hosts three bedrooms, master bedroom with fitted wardrobes, ensuring ample storage space. The bathroom suite reflects the same level of sophistication found throughout the home.

Outside, a private west facing rear garden invites relaxation on a paved patio, while the front garden enhances the property's curb appeal. Practical features include double-glazed windows & doors, gas central heating & a garage with a driveway.

For those seeking a stylish and well appointed home, this property is not to be missed. Contact Mantons Estate Agents today for more information or to schedule a viewing.

Spurcroft is situated in Barton Hills, a highly sought-after housing development built in the early 1990s. This area remains as popular today as when it was first established. Residents enjoy convenient access to various local amenities, including Sainsbury's & Aldi supermarkets, doctors, Costa coffee shop, dentist, a public house & local bus routes. The development falls within the catchment areas for Warden Hill Primary & Lea Manor High schools.

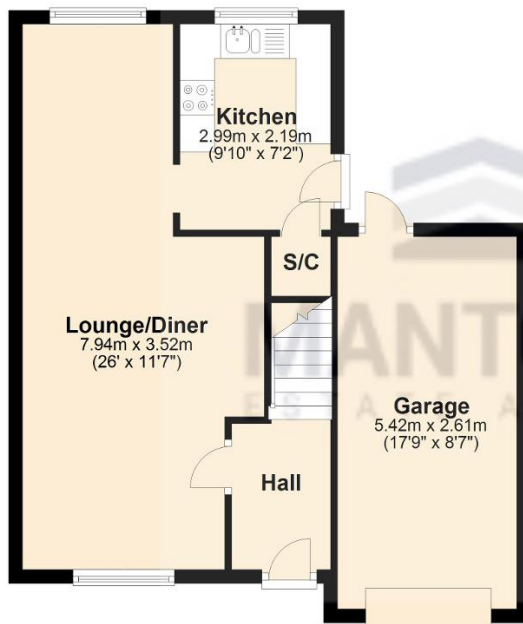
Additional Information

EPC Rating C. Council Tax Band C. 771 sqft (Approx.)



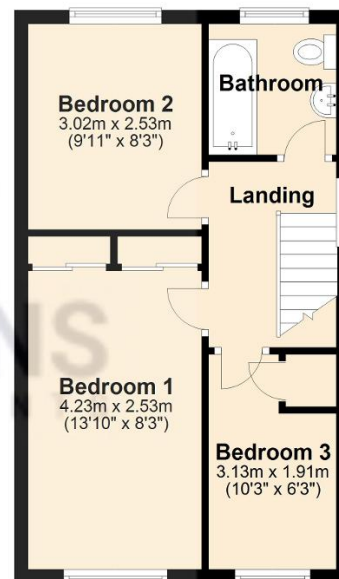
Ground Floor

Approx. 35.6 sq. metres (383.0 sq. feet)



First Floor

Approx. 36.1 sq. metres (388.2 sq. feet)



Total area: approx. 71.6 sq. metres (771.2 sq. feet)