

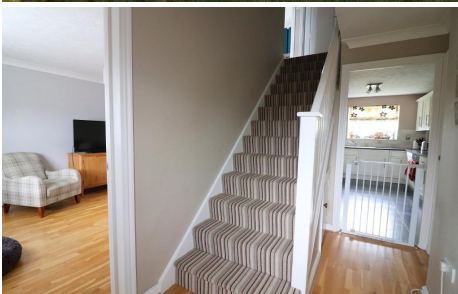


MANTONS

ESTATE AGENTS

3 Bedroom End Terraced for Sale - £350,000

Whitwell Close, Luton, Bedfordshire, LU3 4BS



KEY FEATURES:

- WELL PRESENTED END OF TERRACE HOME
- THREE GENEROUS SIZE BEDROOMS
- POPULAR 'BARTON HILLS' DEVELOPMENT
- EN SUITE TO MASTER BEDROOM
- DECORATED TO A CONTEMPORARY THEME
- MODERN KITCHEN, BATHROOM & CLOAKROOM
- RECENTLY INSTALLED BOILER
- WALKING DISTANCE TO SAINSBURYS & ALDI

Description

MANTONS ESTATE AGENTS are delighted to offer for sale this beautifully presented three bedroom end of terrace home, located in the sought-after 'Barton Hills' development.

This impressive home, decorated in a contemporary style, features a private rear garden, recently installed boiler with Hive & an en suite shower room to the master bedroom.

The spacious layout includes an entrance hall, cloakroom & a 14ft living room that flows into the dining area, which has sliding patio doors opening to the rear garden. The modern fitted kitchen is equipped with integrated appliances, including a washing machine, fridge/freezer & induction hob. There is also a stylish bathroom suite & three well proportioned bedrooms, with the master bedroom boasting fitted wardrobes & an en suite shower room.

Additional benefits of this property include double glazed windows & doors, gas central heating, an allocated parking bay under a carport, a well-maintained rear garden with a patio area & a front garden.

An internal viewing is essential to fully appreciate everything this property has to offer. For further information, please contact Mantons Estate Agents.

Whitwell Close is situated in Barton Hills, a highly sought-after housing development built in the early 1990s. This area remains as popular today as when it was first established. Residents enjoy convenient access to various local amenities, including Sainsbury's & Aldi supermarkets, doctors, Costa coffee shop, dentist, a public house & local bus routes. The development falls within the catchment areas for Warden Hill Primary & Lea Manor High schools.

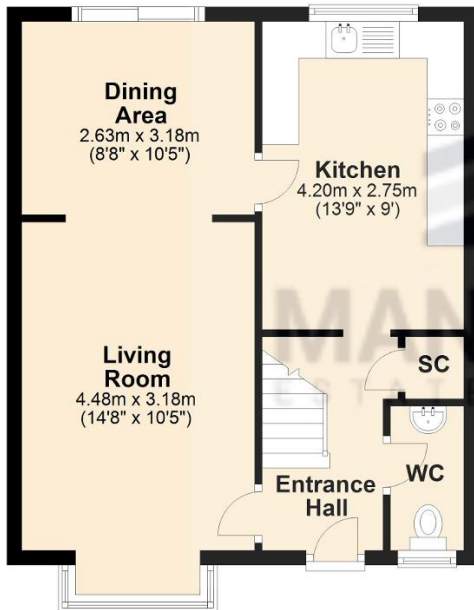
Additional Information

EPC Rating C. Council Tax Band C. 942 sqft (Approx.)



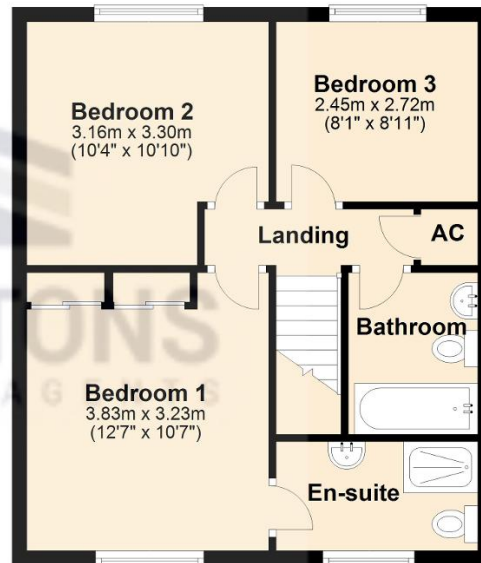
Ground Floor

Approx. 44.0 sq. metres (473.8 sq. feet)



First Floor

Approx. 43.5 sq. metres (468.2 sq. feet)



Total area: approx. 87.5 sq. metres (942.1 sq. feet)