



MANTONS

ESTATE AGENTS

3 Bedroom Detached for Sale - £385,000

Fisher Close, Barton Le Clay, Bedfordshire, MK45 4NF



KEY FEATURES:

- WELL APPOINTED DETACHED HOME
- THREE BEDROOMS, MASTER WITH EN SUITE
- GARAGE WITH DRIVEWAY
- GAS CENTRAL HEATING VIA A COMBI BOILER
- LIVING ROOM & DINING AREA
- FITTED KITCHEN, BATHROOM & CLOAKROOM
- DOUBLE GLAZED WINDOWS & DOORS
- WALKING DISTANCE TO AN ARRAY OF SHOPS

Description

MANTONS ESTATE AGENTS are delighted to present this beautifully maintained three bedroom detached family home, nestled in the highly sought-after village of Barton Le Clay. This charming property offers modern living spaces, an East facing private rear garden & the added convenience of a garage with driveway.

Upon entering, you are welcomed by an inviting entrance porch & hall, leading to a spacious living room that seamlessly flows into the dining area. The dining area features sliding patio doors that open directly onto the rear garden, creating a perfect space for indoor-outdoor living. A modern, well-appointed kitchen is ideal for preparing meals & entertaining.

Upstairs, you'll find three well-proportioned bedrooms, including a master bedroom with fitted wardrobes & an en suite shower room. A stylish family bathroom suite serves the remaining bedrooms.

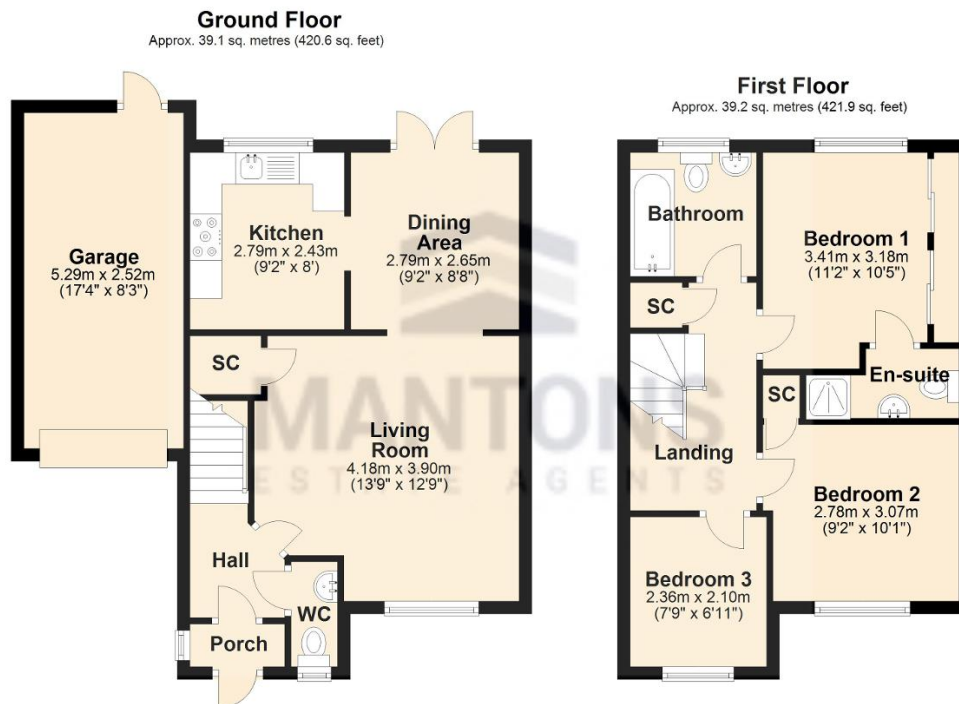
Additional benefits include double glazed windows & doors, efficient gas central heating provided by a combination boiler & a low maintenance rear garden with a paved patio area, perfect for outdoor dining & relaxation. The single garage provides additional storage space or parking, with easy access from the garden.

For more details or to arrange a viewing, please contact Mantons Estate Agents.

Located in the highly sought-after 'Grange Farm' development within the picturesque village of Barton Le Clay, Fisher Close offers a tranquil cul-de-sac setting with scenic views overlooking a small green. This charming property is ideally positioned within walking distance of essential local amenities, including Coop supermarket, doctors, restaurants, chemist & public houses. Nature lovers will enjoy the scenic walks over Barton Springs, while convenient bus routes provide easy access to both Luton & Bedford. Families will benefit from being in the catchment area for Ramsey Lower, Arnold Middle & Harlington Upper schools.

Additional Information

EPC Rating - D. Council Tax Band - D. 842 sqft (Approx).



Total area: approx. 78.3 sq. metres (842.5 sq. feet)