

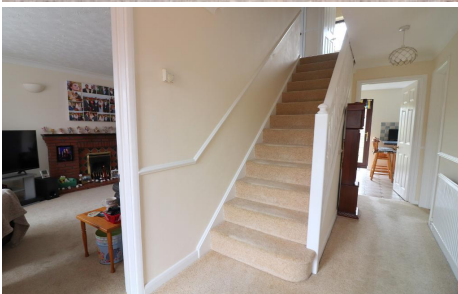


MANTONS

ESTATE AGENTS

4 Bedroom Detached for Sale - £475,000

Fernheath, Luton, Bedfordshire, LU3 4DG



KEY FEATURES:

- IMPRESSIVE DETACHED FAMILY HOME
- FOUR WELL PROPORTIONED BEDROOMS
- CUL DE SAC LOCATION IN BARTON HILLS
- DECORATED TO A CONTEMPORARY THEME
- DOUBLE GARAGE & AMPLE OFF ROAD PARKING
- EN SUITE TO MASTER BEDROOM
- FAMILY BATHROOM & CLOAKROOM
- DOUBLE GLAZED WINDOWS & DOORS

Description

MANTONS ESTATE AGENTS are delighted to offer this impressive four bedroom detached family home, situated in the prestigious 'Barton Hills' development, nestled at the end of a quiet cul-de-sac. Offering approximately 1,295 sqft of living space, this beautifully presented property is thoughtfully designed to meet the needs of modern family living.

Recently updated with a stylish, contemporary décor throughout, the former garage has been converted into a versatile space, currently functioning as a sitting room & utility room, while a new double garage has been added to the front. An internal viewing is highly recommended to fully appreciate the quality & charm of this home.

The welcoming entrance hall leads to a spacious 24ft lounge/diner with French doors opening onto the rear garden, perfect for entertaining or family time. The well-appointed kitchen/breakfast room provides ample cupboard & counter space, ideal for meal preparation & casual dining. A convenient cloakroom is also situated on the ground floor.

Upstairs, you'll find four generously sized bedrooms, including a master bedroom with fitted wardrobes & an en suite shower room, as well as a modern family bathroom suite.

Further features include gas central heating (serviced annually), a generous size rear garden with a paved patio area, mature borders, feature lighting & a pond. A block-paved driveway offers ample off-road parking, leading to the double garage. The property is also equipped with an intruder alarm system (serviced annually).

Contact Mantons Estate Agents today to arrange a viewing or for more details on this exceptional property.

Nestled in the peaceful & exclusive close of Fernheath, this detached home is perfectly positioned in the desirable Barton Hills development, a sought-after area since its construction in the early 1990s. Located at the end of a quiet cul-de-sac, the property enjoys a serene setting adjacent to open parkland, providing a sense of tranquility & privacy.

Within walking distance, you'll find all essential amenities including Sainsbury's & Aldi supermarkets, a doctor's surgery, Costa Coffee, dentist, local pub & well-connected bus routes. The property also falls within the catchment area for the highly regarded Bramingham Primary & Lea Manor High schools, making it ideal for families.

This home combines the benefits of a peaceful location with convenient access to local amenities.



Total area: approx. 120.4 sq. metres (1295.9 sq. feet)