



# MANTONS

ESTATE AGENTS

4 Bedroom Detached for Sale - Offers in Excess of £550,000

Holly Walk, Silsoe, Bedfordshire, MK45 4EB



## KEY FEATURES:

- WELL APPOINTED DETACHED FAMILY HOME
- FOUR WELL PROPORTIONED BEDROOMS
- DECORATED TO A CONTEMPORARY THEME
- EXTENDED TO THE REAR
- SOUGHT AFTER SILSOE VILLAGE LOCATION
- FITTED KITCHEN/BREAKFAST ROOM & UTILITY
- POTENTIAL TO EXTEND FURTHER (STP)
- GAS CENTRAL HEATING VIA COMBI BOILER

## Description

MANTONS ESTATE AGENTS are delighted to present this immaculate four bedroom detached family home, located in the highly desirable village of Silsoe. Though attached to the neighboring property by only a few meters, this home offers the privacy & space of a detached property. Extended to the rear, it features a stunning 14ft kitchen/breakfast room, complete with a utility room & cloakroom, as well as great potential for further expansion (stp).

Beautifully decorated in a contemporary style, the property boasts smooth ceilings, modern floor coverings & high-quality fittings throughout. Highlights include a stylish bathroom suite, a modern combination boiler & a garage with ample off road parking.

The home offers a spacious entrance hall, office, a comfortable living room with a charming feature fireplace & a dining area with sliding patio doors leading to the well maintained rear garden. The stunning kitchen/breakfast room includes plenty of cupboard space, integrated dishwasher & fridge/freezer, twin Velux windows & a breakfast bar. Additionally, there is a separate utility room & cloakroom. The first floor features a family bathroom suite & four generously sized bedrooms.

Further benefits of the property include an enclosed rear garden with paved patio areas, brick-built sheds & lawn area. Gas central heating is serviced via a modern combination boiler & the property also features double-glazed windows & doors throughout.

This impressive home offers everything a modern family could need. For more information or to arrange a viewing, contact Mantons Estate Agents today.

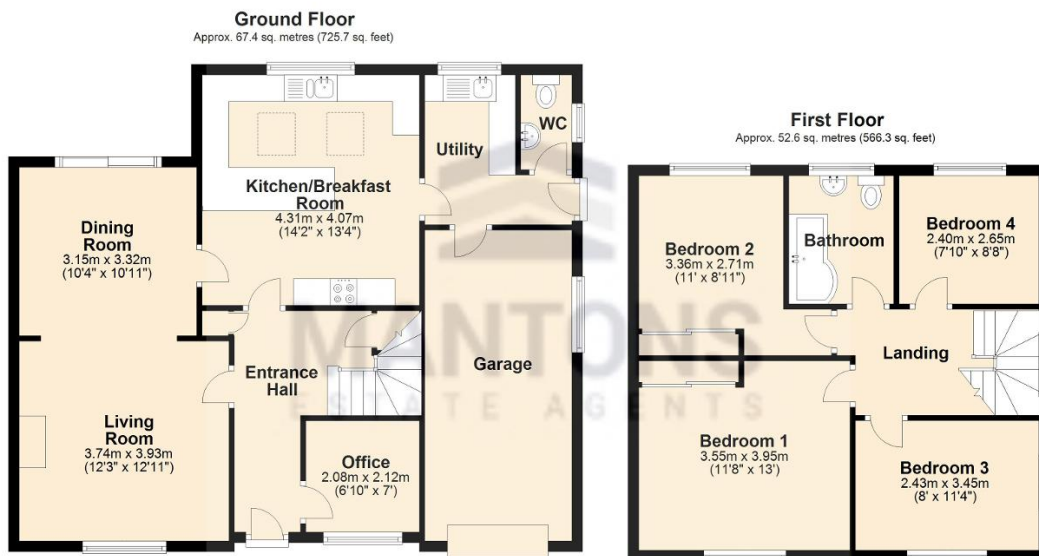
Charming Property on Holly Walk, Silsoe

Situated on the picturesque & highly desirable Holly Walk in the village of Silsoe, this delightful property enjoys a prime location. Within walking distance of local amenities, including shops, children's play park & the stunning Wrest Park, offering the blend of village life & convenience.

The property falls within the catchment areas for excellent local schools, including Silsoe Lower, Arnold Middle & Harlington Upper, making it an ideal choice for families. Don't miss the opportunity to view this exceptional home in one of Silsoe's most sought-after roads.

## Additional Information

EPC Rating C. Council Tax Band E. 1292 sqft (Approx.)



Total area: approx. 120.0 sq. metres (1292.0 sq. feet)