



MANTONS

ESTATE AGENTS

2 Bedroom Terraced for Sale - £274,000

Springfield Road, Luton, Bedfordshire, LU3 2HF



KEY FEATURES:

- WELL APPOINTED TERRACE HOME • TWO WELL PROPORTIONED BEDROOMS • FITTED KITCHEN & BATHROOM • LOUNGE/DINER WITH PATIO DOORS TO GARDEN • SECLUDED EAST FACING REAR GARDEN
- DRIVEWAY TO FRONT • GAS CENTRAL HEATING & DOUBLE GLAZED • WALKING DISTANCE TO SHOPS & SCHOOLS

Description

MANTONS ESTATE AGENTS are pleased to offer for sale this well presented two bedroom terrace home. Decorated to a contemporary theme throughout with modern fixtures & fittings and no upper chain complications.

In brief the property comprises; Entrance hall with stairs rising to the first floor, fitted kitchen, lounge/diner with patio doors opening to the rear garden, two well proportioned bedrooms & bathroom suite.

Further benefits include gas central heating via a replacement boiler, double glazing, private east facing rear garden & driveway.

Contact Mantons Estate Agents for more information or to arrange a viewing.

Springfield Road is situated in Warden Hills, a very popular location on the outskirts of Luton. This particular development was constructed in the late 1980's and is as popular today as when first built. Walking distance to rolling countryside, local shops and doctors. Sainsbury's & Aldi supermarkets are both within easy reach. Warden Hill Primary & Icknield High are the school catchments.

Additional Information

EPC Rating C. Council Tax Band B. 607 Sq.ft (Approx).



Approximate Gross Internal Area = 56.4 sq m / 607 sq ft

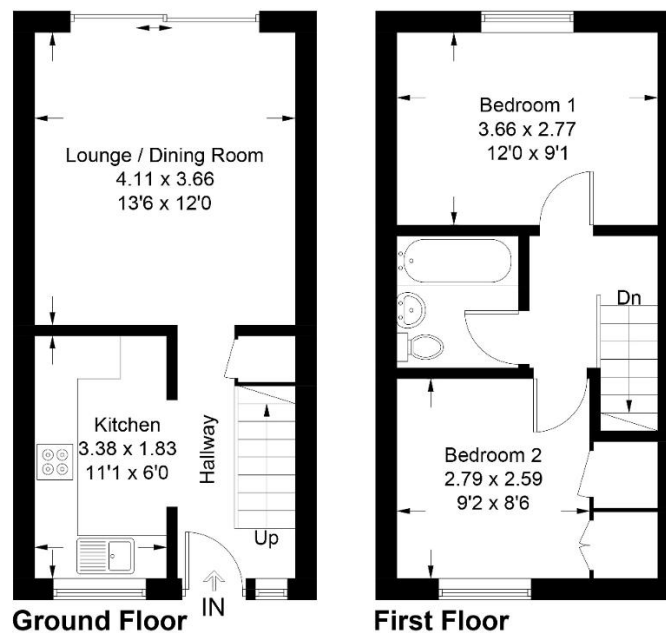


Illustration for identification purposes only, measurements are approximate, not to scale. Fourlabs.co.uk (ID1178838)